

# GUIDE TO SHIP REPAIR ESTIMATES

(IN MAN-HOURS)



# GUIDE TO SHIP REPAIR ESTIMATES

(IN MAN-HOURS)

Don Butler

**B**UTTERWORTH  
**H**EINEMANN

OXFORD AUCKLAND BOSTON JOHANNESBURG MELBOURNE NEW DELHI

Butterworth-Heinemann  
Linacre House, Jordan Hill, Oxford OX2 8DP  
225 Wildwood Avenue, Woburn, MA 01801-2041  
A division of Reed Educational and Professional Publishing Ltd

 A member of the Reed Elsevier plc group

First published 2000

© Don Butler 2000

All rights reserved. No part of this publication may be reproduced in any material form (including photocopying or storing in any medium by electronic means and whether or not transiently or incidentally to some other use of this publication) without the written permission of the copyright holder except in accordance with the provisions of the Copyright, Designs and Patents Act 1988 or under the terms of a licence issued by the Copyright Licensing Agency Ltd, 90 Tottenham Court Road, London, England W1P 9HE. Applications for the copyright holder's written permission to reproduce any part of this publication should be addressed to the publishers

### **British Library Cataloguing in Publication Data**

A catalogue record for this book is available from the British Library

### **Library of Congress Cataloguing in Publication Data**

A catalogue record for this book is available from the Library of Congress

ISBN 0 7506 4834 1

Typeset by Avocet Typeset, Brill, Aylesbury, Bucks  
Printed and bound in Great Britain by Biddles Ltd,  
Guildford and King's Lynn

**PLANT A  
TREE**



---

FOR EVERY TITLE THAT WE PUBLISH, BUTTERWORTH-HEINEMANN  
WILL PAY FOR BTCV TO PLANT AND CARE FOR A TREE.

---

# Contents

<i>List of figures</i>	vii
<i>List of tables</i>	ix
<b>1 Introduction</b>	<b>1</b>
<b>2 Drydocking works</b>	<b>5</b>
Berth preparation	5
Docking and undocking	6
Dock rent per day	6
Hull preparation	8
Hull painting	10
Rudder works	13
Propeller works	14
Tailshaft works	17
Anodes	20
Sea chests	22
Docking plugs	22
Valves	23
Fenders	25
Anchors and cables	26
Chain lockers	27
Staging	28
<b>3 Steel works</b>	<b>29</b>
<b>4 Pipe works</b>	<b>35</b>

<b>5</b>	<b>Mechanical works</b>	<b>41</b>
	Overhauling diesel engines (single-acting, slow-running, two-stroke, cross-head)	42
	Overhauling diesel engines (single-acting, slow-running, in-line, four-stroke, trunk)	47
	Valves	52
	Condensers	55
	Heat exchangers	56
	Turbines	57
	Compressors	60
	Receivers	61
	Pumps	62
	Boilers (main and auxiliary)	67
<b>6</b>	<b>Electrical works</b>	<b>69</b>
<b>7</b>	<b>General works</b>	<b>83</b>
<b>8</b>	<b>Planning charts</b>	<b>85</b>
	Sample graph loadings for major trades in ship repairing	89
	<i>Index</i>	93

# Figures

1	A vessel sitting on keel blocks undergoing repairs in dry dock	6
2	A small grab dredger in a graving dock	8
3	Hull preparation by water blasting and hull painting by airless spray	10
4	The rudder and propeller of a small vessel in dry dock	15
5	A propeller undergoing tests	16
6	Repair of damage to shell plating	31
7	Main engine cooling-water pipes	37
8	A main propulsion diesel engine	42
9	A ship's medium-speed main engine	47
10	A ballast system valve chest	53
11	A standard screw-lift globe valve	54
12	A vertical electric-driven centrifugal water pump	63
13	A main electrical switchboard in a machinery control room	69
14	A generator control panel in a main switchboard	70
15	A standard AC induction electrical motor	72
16	A ship's main diesel-driven AC alternator	74
17	Grouping of electric cables on a cable tray	78
18	Control panels of a ship's auxiliary equipment	81





# Tables

2.1	Shifting of blocks after docking vessel	5
2.2	Dock services	7
2.3	Removal of rudder and stock for survey	13
2.4	Propeller works (fixed pitch) – 1	13
2.5	Propeller works (fixed pitch) – 2	15
2.6	Propeller polishing <i>in situ</i> (fixed pitch)	16
2.7	Tailshaft/sterntube clearances	17
2.8	Removal of tailshaft for survey	18
2.9	Gland and Simplex-type seal	19
2.10	Anodes on hull and in sea chests	20
2.11	Sea chests and strainers	21
2.12	Sea valves	23
2.13	Ship side storm valves	24
2.14	Hollow fenders in half schedule 80 steel pipe	25
2.15	Anchor cables (per side)	26
2.16	Chain lockers (per side)	27
2.17	Erection of tubular steel scaffolding	28
3.1	Steel works renewals	32
4.1	Pipe work renewals in schedule 40 and schedule 80 seamless steel	35
4.2	Pipe clamps	38
4.3	Spool pieces	39
5.1	Top overhaul	43
5.2	Cylinder liners – 1	44
5.3	Bearing survey – 1	45
5.4	Crankshaft deflections – 1	45

5.5	Four-stroke trunk-type main engines	48
5.6	Cylinder liners – 2	49
5.7	Bearing survey – 2	50
5.8	Crankshaft deflections – 2	51
5.9	Overhauling valves	52
5.10	Main condenser	55
5.11	Overhauling heat exchanger	56
5.12	Main steam turbines	57
5.13	Flexible coupling	57
5.14	Auxiliary steam turbines	58
5.15	Water-tube boiler feed pumps (multi-stage type)	59
5.16	Oil tanker cargo pumps	60
5.17	Air compressor (two-stage type)	60
5.18	Air receivers	61
5.19	Horizontal centrifugal-type pumps	62
5.20	Reciprocating-type pumps, steam driven	64
5.21	Reciprocating-type pumps, electric motor driven	64
5.22	Gear-type pumps (helical and tooth)	65
5.23	Steering gear	66
5.24	Cleaning of water-tube boilers	67
6.1	Insulation resistance test	69
6.2	Switchboard	70
6.3	Electric motors	71
6.4	Electric motors for winch/windlass/crane	72
6.5	Electric generators	73
6.6	Installations of unarmoured, flexible, multi-core, rubber-insulated cable	75
6.7	Installations of rubber-insulated, armoured flexible cable	77
6.8	Installations of rubber-insulated, armoured flexible single-core cable	79
6.9	Installations of electric cable tray	80
6.10	Installations of electric cable conduit	82
7.1	General cleaning	83
7.2	Tank cleaning	84
7.3	Tank testing	84

# 1

## Introduction

This guide has been produced in order to outline to technical superintendents of ship owners and ship managers the manner in which the commercial departments of ship repairers compile quotations. The ship repairers use their tariffs for standard jobs to build up their quotations. This guide is based on these tariffs, but is made up in man-hours to assist long-term pricing. It can also be of assistance to shipyards without this information to prepare man-hour planning charts, helping them to assess manpower requirements for jobs and to produce time-based plans. Man-hours have been used so that this book will not be 'dated' and can be used without encountering the problems of increases in costs over the years. Where man-hour costs are not possible, these have been noted and suggestions made to compile costs against these items.

Apart from steel works and pipe works, no cost of materials has been included within this book. Only man-hours are used in order that the compiler may assess shipyards' charges based on the current market price of labour.

Where materials are conventionally supplied by the repair contractor, these have been built into the labour costs and evaluated as man-hours. Apart from steel works and pipe works, the cost of materials in the jobs listed are generally minimal when compared with labour costs. So, apart from these two, most of the other costs will be consumables.

A comparison between various countries has been included. The workers of some countries have more efficient skills than others. Some establishments have more sophisticated equipment than others.

However, common ground has been assumed in the output of workers in standard jobs.

It is stressed that this book considers only ship 'repairs', that is, removing damaged, worn, or corroded items, making or supplying new parts to the pattern of the old and installing. It is not meant to be used in its entirety for new building work, although, in some areas, it may prove useful.

Unless specifically mentioned, all the repairs are *in situ*. For removing a specific item ashore to the workshops, consideration should be given to any removals necessary to facilitate transportation through the ship and to the shore workshop and the later refitting of these removals, and an appropriate charge made.

In calculating the labour man-hours, it should be borne in mind that these will vary for similar jobs carried out under different conditions, such as world location, working conditions, environment, type of labour, availability of back-up labour, etc.

The labour times given in this book are based upon the use of trained and skilled personnel, working in reasonable conditions in an environment of a good-quality ship repair yard with all necessary tools, equipment and readily available materials and consumables.

All these factors should be considered when calculating the man-hours and if conditions vary from that of the assumption of this book then factors should be applied to compensate for any shortfall in any conditions. As an example, if the work is being carried out in a country which suffers from heat and high humidity, then the output of a worker can fall to 50% that of the same worker in another country which has an easier working climate.

With reduced work outputs for whatever reason, a ship repair yard will need to mark up their pricing rates according to their type of variance, and this is passed on to the ship owner. The estimator should consider influences applicable and may need to apply a factor to increase the man-hours according to whatever may reduce the output of a contractor's workers.

Once the man-hours have been calculated, the estimator must then apply a pricing rate to the total. These vary from place to place and should be ascertained from the ship repair establishments under consideration. The variance of the rates will be applicable to certain considerations which can be applied. These considerations can include the local economy, how hungry the yard is for work, the

current workload of the yard and other similar situations. The estimator can look at the economic climate of the repair yards and ascertain a variance factor for each yard and apply these accordingly.

The figures shown in this book are not to be viewed as invariable. Obviously different shipyards have different working conditions and techniques, so the man-hours for the work can vary. However, the figures shown can be used as a fair assessment of the work in general and can produce price estimates for budget purposes to a shipowner. This is the object of the book.

When requesting quotations from shipyards the quotes received always vary considerably. The figures given in this book reflect competitive tariff rates.

The author has long-term experience in the ship repair world and he is currently a director of a marine consultancy. He is a former sea-going engineer, qualified and experienced in steam and motor ships, even with experience of steam reciprocating engines and saturated steam fire tube boilers, rising from there to repair superintendent. He has extensive ship repair yard experience gained from production, commercial and general managerial positions.

Seeing a lack of this type of publication, the author decided to put his long-term experience to use in order to assist those responsible for compiling repair specifications with a pricing strategy so they may build up costings for their planned repair periods.

Included in the text are a number of tips to be applied in the preparation of repair specifications and finalizing contracts with ship repair yards.



## 2 Drydocking works

### Berth preparation

This item is included within the charges for docking and undocking and should also include for dismantling and removal of any specially prepared blocks.

**Table 2.1** Shifting of blocks after docking vessel

This covers shifting of blocks at the request of the owner for access works not known at the time of quoting. This involves cutting out the soft wood capping of the block, shifting the block and reinstalling at a different location.

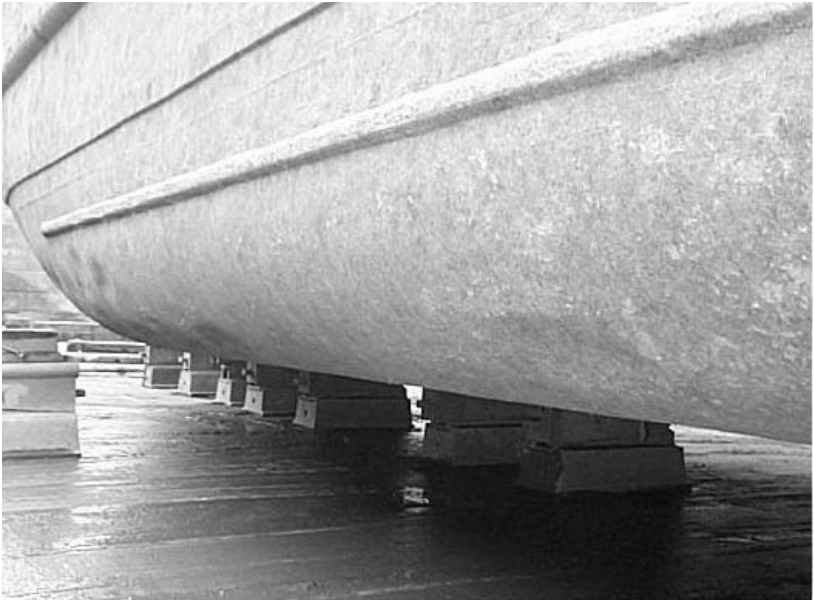
<i>DWT</i>	<i>Man-hours</i>	
	<i>Keel block</i>	<i>Side block</i>
< 20 000	5	3
20 000–100 000	10	5
100 000–200 000	16	8
> 200 000	20	12

## Docking and undocking

This is variable dependent upon world location and market demands. Dry docking charges regularly change depending upon the economic climate, so an owner's superintendent should check with selected drydock owners for their current rates.

## Dock rent per day

The above comments also apply here.



**Figure 1** A vessel sitting on keel blocks undergoing repairs in dry dock



**Table 2.2** Dock services

<i>Service</i>	<i>Man-hours</i>	
	<i>&lt;100 LOA</i>	<i>&gt;100 LOA</i>
Fire and Safety watchman per day	8/shift	8/shift
Garbage skip per day	2	4
Electrical shore power connection and disconnection	4	5
Electrical shore power per unit	Variable	Variable
Temporary connection of fire main to ship's system	5	6
Maintaining pressure to ship's fire main per day	3	3
Sea circulating water connection	3	4
Sea circulating water per day	4	4
Telephone connection on board ship	3	3
Supply of ballast water per connection	6	8
Supply of fresh water per connection	3	5
Connection and disconnection of compressed air	3	5
Gas-free testing per test/visit and issue of gas-free certificate	8	10
Electric heating lamps per connection.	4	5
Ventilation fans and portable ducting each	5	5
Wharfage: charges to lie vessel alongside contractor's berth. Usually a fixed rate per metre of vessel's length.	Variable	Variable
Cranage: charges variable, dependent upon size of crane.	Variable	Variable

*Notes:*

Contractors often charge for temporary lights provided for their own use in order to carry out repairs. This is an arguable point as it is for their benefit and not the owners. It should be classed as an overhead and costed accordingly. Provided there are none of the ship's staff utilizing the temporary lights, then it should be a contractor's cost.



**Figure 2** A small grab dredger in a graving dock

## Hull preparation

- Hand scraping normal
- Hand scraping hard
- Degreasing before preparation works
- High pressure jetwash (up to 3000 p.s.i.)
- Water blast
- Vacuum dry blast
- Dry blast (Dependent upon world location. Prohibited in some countries)
- Grit sweep
- Grit blast to Sa 2
- Grit blast to Sa 2.5
- Spot blast to Sa 2.5
- Hose down with fresh water after dry blast
- Disc preparation to St2

The charges for hull preparation works should be given in price per square metre. This will enable the owner's superintendent to calculate the price for the full scope of works.

## Special notes for hull preparation

The ship owner's superintendent should be fully aware of the manner in which the ship repair yard has quoted for the hull preparation works. This is to obviate surprise items when confronted with the final invoice.

A ship repair yard should quote fully inclusive rates, which cover the supply of all workers, equipment, machines, tools, and consumables to carry out the quoted works and also for all final cleaning-up operations. Inflated invoices have been known from ship yards covering the removal of used blasting grit, removed sea growth, etc. The dry dock may not belong to the repair contractor and additional charges may be made by the dry dock owner for these items. Ensure that these charges are well highlighted before acceptance of the quotation. It is far better to clear up these matters prior to the arrival of the vessel instead of being involved in arguments just before the vessel sails. Time taken to consider what a yard may see as justifiable extras before the event is well spent prior to placing the order, when everyone in the yard is eager to secure the contract.

The use of dry blasting grit is being phased out in certain areas as it is environmentally unfriendly. Dry sand is not used for similar reasons and is also a health hazard. The choice is for vacuum dry blasting or water blasting using very high pressures. Water blasting can use fresh or salt water, but the salt water must be followed by high-pressure jetwashing using fresh water to remove the salts.



**Figure 3** Hull preparation by water blasting and hull painting by airless spray

## Hull painting

- Flat bottom
- Vertical sides
- Topsides
- Touch up after spot blast
- Names, homeport, load lines, draft marks.

The charges for hull painting works should be given in price per square metre, and a fixed rate for names and marks. This will enable the owner's superintendent to calculate the full price for the scope of

works. (See below for the method of determining the painting areas of ships' hulls.)

## **Notes for hull painting**

Shipyard standard rates will apply for paints considered as 'normal'. This refers to paints being applied by airless spray method up to a maximum of 100 microns ( $\mu$ ) dry film thickness (dft) and having a drying time between applications not exceeding 4 hours. The owner should ensure that the shipyard is aware of any special, or non-conventional, painting compositions which may be used.

## **Additional note on the supply of painting compositions**

It is generally accepted practice for all painting compositions to be owner's supply. This is due to the paint manufacturer giving their guarantee to the *purchaser* of their paints. Included from the manufacturer, within the price of the paints, is their technical back-up, provision of a technical specification on the preparation works and paint application, and the provision of a technical supervisor to oversee the whole process of the paint application. If the paints have been applied to the satisfaction of the technical representative, then the full guarantee will be given to the purchaser by the paint manufacturer.

The contractor is only responsible for the preparation works and the application of the painting compositions. Provided they have satisfied the conditions of the technical specification, and the attending technical representative, then there will be no comeback on them if a problem with the paints occurs at a later date.

With the owner being the purchaser, the paint manufacturer will have the responsibility to provide new paint in the event of problems. The application is the responsibility of the owner. He will have to bear the cost of drydocking the ship and having the replacement paints applied.

If the ship repair contractor supplies the paints, he will be responsible for all these costs incurred. Hence it is not in the interests of the ship repair contractor to supply painting compositions.

*Formula to determine the painting area of ship hulls*

Input the following data:

LOA in metres	xxx
LPP in metres	xxx
BM in metres	xx
Draft max in metres	xx
P = UW constant for type of hull (0.7 for fine hulls, 0.9 for tankers)	0.x
Height of boot-top in metres	xx
Height of topsides in metres	xx
N = constant for topsides for type of hull (0.84–0.92)	0.xx
Height of bulwarks in metres	xx

Underwater area including boot-top	
Boot-top area	
Topsides area	
Bulwarks area	

Underwater area including boot-top

$$\text{Area} = \{(2 \times \text{draft}) + \text{BM}\} \times \text{LPP} \times \text{P} \text{ (Constant for vessel shape)}$$

Boot-top area

$$\text{Area} = \{(0.5 \times \text{BM}) + \text{LPP}\} \times 2 \times \text{height of boot-top}$$

Topsides area

$$\text{Area} = \{\text{LOA} + (0.5 \times \text{BM})\} \times 2 \times \text{height of topsides}$$

Bulwarks area (Note: external area only)

$$\text{Area} = \{\text{LOA} + (0.5 \times \text{BM})\} \times 2 \times \text{height of bulwarks}$$

Using the above formulae, it is a simple matter to formulate a spreadsheet to determine the external painting areas of the vessel. Input the data into the table and use the formulae to determine the external painting areas of the vessel.

## Rudder works

**Table 2.3** Removal of rudder for survey

- (a) Repacking stock gland with owner's supplied packing. Measuring clearances, *in situ*.
- (b) Disconnecting rudder from palm and landing in dock bottom for survey and full calibrations. Refitting as before on completion.

<i>DWT</i>	<i>Man-hours</i>	
	(a)	(b)
>3 000	15	165
5 000	18	250
10 000	20	280
15 000	25	300
20 000	28	350
30 000	30	400
50 000	35	500
80 000	45	600
100 000	60	800
150 000	75	900
200 000	90	1 000
250 000	110	1 200
350 000	120	1 500

## Propeller works

**Table 2.4** Propeller works (fixed pitch) – 1

- (a) Disconnecting and removing propeller cone, removing propeller nut, setting up ship's withdrawing gear, rigging and withdrawing propeller and landing in dock bottom. On completion, rigging and refitting propeller as before and tightening to instructions of owner's representative. Excluding all removals for access, any other work on propeller and assuming no rudder works.
- (b) Transporting propeller to workshops for further works and returning to dock bottom on completion.

<i>Shaft dia. (mm)</i>	<i>Man-hours</i>	
	<i>(a)</i>	<i>(b)</i>
Up to 100	20	15
100–200	30	18
200–300	45	25
300–400	60	30
400–800	90	60
800–900	150	100

**Table 2.5** Propeller works (fixed pitch) – 2

- (a) Receiving bronze propeller in workshop, setting up on calibration stand, cleaning for examination, measuring and recording full set of pitch readings. Polishing propeller, setting up on static balancing machine, checking and correcting minor imbalances.
- (b) Heating, fairing, building up small amounts of fractures and missing sections, grinding and polishing.





**Figure 4** The rudder and propeller of a small vessel in dry dock

<i>Dia. (mm)</i>	<i>Man-hours</i>	
	<i>Manganese Bronze</i>	<i>Aluminium Bronze</i>
Up to 400	15	21
400–800	32	42
800–1200	52	68
1200–1800	75	85
1800–2000	90	105
2000–2500	100	125
2500–3000	130	150
3000–4000	150	180
4000–5000	180	210

*Note:* Covers repairs outside 0.4 blade radius only; classed as minor repair.



**Figure 5** A propeller undergoing tests

**Table 2.6** Propeller polishing *in situ* (fixed pitch)

Polishing *in situ* using high-speed disc grinder, coating with oil; ship in dry dock.

<i>Dia. (mm)</i>	<i>Man-hours</i>
Up to 400	6
400–800	11
800–1200	17
1200–1800	25
1800–2000	28
2000–2500	35
2500–3000	50
3000–4000	80
4000–5000	120

## Tailshaft works

**Table 2.7** Tailshaft/sterntube clearances

Removing rope-guard, measuring and recording wear-down of tailshaft and refitting rope-guard, including erection of staging for access, by:

- (a) Feeler gauge.
- (b) Poker gauge coupled with jacking up shaft.
- (c) Repacking internal stern gland using owner's supplied soft greasy packing.

<i>Tailshaft dia. (mm)</i>	<i>Man-hours</i>		
	<i>(a)</i>	<i>(b)</i>	<i>(c)</i>
Up to 150	10	15	7
150–250	15	22	11
250–300	21	30	14
300–400	30	40	30
400–800	35	45	35
800–1200	50	55	–
1200–1800	–	57	–
1800–2000	–	60	–

**Table 2.8** Removal of tailshaft for survey

Disconnecting and removing fixed-pitch propeller and landing in dock bottom

- (a) Disconnecting and removing tapered, keyed, inboard tailshaft coupling, drawing tailshaft outboard and landing in dock bottom for survey, cleaning, calibrating and refitting all on completion.
- (b) Disconnecting inboard intermediate shaft fixed, flanged couplings, releasing one in number journal bearing holding down bolts, rigging intermediate shaft, lifting clear and placing in temporary storage on ship's side. Assuming storage space available. Withdrawing tailshaft inboard, hanging in accessible position, cleaning, calibrating and refitting on completion. Relocating intermediate shaft and journal bearing in original position, fitting all holding-down bolts and recoupling flanges all as before.

Includes erection of staging for access.

Includes repacking inboard gland using owner's supplied, conventional soft greasy packing.

Excludes any repairs.

Excludes any work on patent gland seals.

<i>Tailshaft Dia. (mm)</i>	<i>Man-hours</i>	
	<i>(a) Withdrawing tailshaft outboard</i>	<i>(b) Withdrawing tailshaft inboard</i>
Up to 150	90	140
150–250	120	180
250–300	200	250
300–400	300	400
400–800	500	600
800–1200	–	1000
1200–1800	–	1200

## Crack detection

- Magnaflux testing of tailshaft taper and key way.
- Allowance made of 8 man-hours for the testing works, which is performed after all removals for access.

**Table 2.9** Gland and Simplex-type seal

- (a) Removing gland follower, removing existing packing from internal stern gland, cleaning out stuffing box and repacking gland using owner's supplied conventional soft greasy packing.
- (b) Disconnecting and removing forward and aft patent mechanical seals (Simplex-type). Removing ashore to workshop, fully opening up, cleaning for examination and calibration. Reassembling with new rubber seals, owner's supply.  
Excluding all machining works.  
Assuming previous withdrawing of tailshaft.

<i>Tailshaft Dia. (mm)</i>	<i>Man-hours</i>	
	<i>(a)</i>	<i>(b)</i>
Up to 150	8	—
150–250	12	—
250–300	15	35
300–400	23	50
400–800	30	110
800–1200	35	150
1200–1800	—	200
1800–2000	—	230

## Anodes

**Table 2.10** Anodes on hull and in sea chests

Cutting off existing corroded anode, renewing owner's supplied zinc anode by welding integral steel strip to ship's hull. Excluding all access works.

<i>Weight (kg)</i>	<i>Man-hours</i>
3	1
5	1
10	1.5
20	2

To determine the amount of anodes required for a vessel, the owner should contact a supplier who will calculate the exact requirement.

The following shows the method of determining weights of zinc anodes. (See also the section on hull painting for determining the underwater area of ships' hulls.)

*Formula to determine the weight of sacrificial zinc anodes required on a ship's underwater area*

Underwater area of ship in square metres	xxx,xxx
Number of years between anode change	3
Capacity of material in amp hours/kg	781
Current density of material in mA/m <sup>2</sup> (ave. 10–30 )	20
K	8760

Formula for total weight of sacrificial zinc anodes (kg) =  

$$\frac{\text{Current amps} \times \text{design life (years)} \times K (8760)}{\text{Capacity of material (amp hours/kg)}}$$

Where: Current amps =  

$$\frac{\text{Underwater area (m}^2\text{)} \times \text{Current Density}}{1000}$$

Current density of material in mA/m<sup>2</sup> =

Information from manufacturer (between 10 and 30, say 20)

Design Life =

Number of years between dry dockings (e.g. 3)

K =

Number of hours in 1 year = 8760

Capacity of material (amp hours / kg) =

Information from manufacturer (781 is common)

Using the above formula, it is a simple matter to create a spreadsheet to determine the weight of zinc anodes.

Input the data into the table and use the formula to determine the weight of zinc anodes for the period required.

## Sea chests

**Table 2.11** Sea chests and strainers

Opening up of sea chests by removing ship side strainers, cleaning and painting with owner's paints, as per hull treatment specification. Assuming single grid per chest.

<i>Surface Area m<sup>2</sup></i>	<i>Man-hours</i>
Below 0.3	12
0.3–1	20
Above 1	30
Additional charge per extra grid	5

## Docking plugs

Allowance made of 1 man-hour for removing and later refitting of each tank drain plug using ship's spanner, assuming no locking devices fitted and excluding all removals for access and repairs to threads.



## Valves

**Table 2.12** Sea valves

Opening up hand-operated, globe and gate valve for *in situ* overhaul by disconnecting and removing cover, spindle and gland, cleaning all exposed parts, hand grinding of globe valve, light hand scraping of gate valve, testing bedding, painting internal exposed areas and reassembling with new cover joint and repacking gland with conventional soft packing.

- (a) Butterfly valve: remove, clean, check, testing bedding of seals, paint internal exposed areas and refit; excluding operating gear.
- (b) Checking and cleaning large butterfly valves through the sea chest.

Valve bore (mm)	Globe valve	Gate valve	(a) Butterfly valve	(b) Butterfly valve
>50	4	4.5	6	—
100	6	7	8.5	—
150	8	9	11.5	—
200	10	11	14	—
250	13	14	18	—
300	16	17	22	—
350	20	21	26	13
400	23	24	29	14
450	26	28	33	14.5
500	30	31	37	15
550	34	35	42	16
600	37	39	46	16.5
650	41	43	51	17
700	44	47	56	18
750	47	49	60	19
800	50	53	66	20
900	57	60	81	22
1000	65	68	100	24
1100	73	77	106	25
1200	84	88	113	27
1300	95	100	120	30

*Notes:*

Valves in pump rooms, additional 15%.

Valve in cofferdams and inside tanks, additional 20%.

Removals for access not included.

Staging for access not included.

Removing valve ashore to workshop for the above type of overhaul requires special consideration, dependent upon size. Valves below 20 kg in weight can be assessed as double the *in situ* rate. Above this requires rigging and crane input, which should be assessed separately.

**Table 2.13** Ship side storm valves

Opening up ship side storm valve for *in situ* overhaul, by disconnecting and removing cover, spindle and gland, cleaning all exposed parts, testing bedding, painting internal exposed areas and reassembling with new cover joint and repacking external gland with conventional soft packing.

<i>Dia. (mm)</i>	<i>Man-hours per valve</i>
50	9
75	10
100	12
125	14
150	16
200	17

*Note:* Disconnecting and removing ashore for above overhaul and later refitment; double the above rate.

## Fenders

**Table 2.14** Hollow fenders in half schedule 80 steel pipe

Fendering formed by cutting steel pipe into two halves.

Cropping existing external damaged fendering, hand grinding remaining edges and preparing remaining flat hull plating for welding.

Supplying and fitting new fendering in half-round standard schedule 80 steel pipe and full fillet welding fender in place.

Including erection of staging for access and later dismantling.

Exclusions:

All hull preparation and painting of the steelworks in way of the repairs.

<i>Pipe dia. (mm)</i>	<i>Man-hours per metre</i>	
	<i>Straight run of fender</i>	<i>Curved fender at corners</i>
200	20	30
250	22	32
300	24	34
350	26	36

*Note:* The above figures are for split steel pipe only. For other shapes, then steel fabrication tariffs will be applicable, based upon steel weights.

## Anchors and cables

**Table 2.15** Anchor cables (per side)

Ranging out for examination and later restowing  
 Cleaning by high-pressure jetwash or grit sweeping  
 Calibration of every 20th link and recording  
 Marking shots with white paint  
 Painting cables with owner's supplied bitumastic paint  
 Opening 'Kenter'-type shackle and later closing  
 Disconnect first length of cable and transferring to end  
 Changing cable end for end.

### *Small vessels*

<i>Cable dia. (mm)</i>	<i>Man-hours (per side)</i>
< 25	70
25–50	90

### *Large cargo vessels and oil tankers*

<i>DWT</i>	<i>Man-hours (per side)</i>
< 20 000	100
20 000–50 000	130
50 000–100 000	140
100 000–200 000	200
200 000–300 000	250
over 300 000	270

## Chain lockers

**Table 2.16** Chain lockers (per side)

Opening up, removing dry dirt and debris, handscaling, cleaning and painting one coat bitumastic. Closing up on completion.  
Removing internal floor plates, or grating, cleaning, painting and refitting.

### *Small vessels*

<i>Cable dia. (mm)</i>	<i>Man-hours (per side)</i>
< 25	75
25–50	90

### *Large cargo vessels and oil tankers*

<i>DWT</i>	<i>Man-hours (per side)</i>
< 20 000	100
20 000–50 000	130
50 000–100 000	140
100 000–200 000	200
200 000–300 000	250
over 300 000	270

*Note:* Removal of sludge will be charged extra per m<sup>3</sup>.

## Staging

This item is usually charged within a particular job. When included within the charge of a job, that job price is increased accordingly. However, to assist estimating, it can be based on cubic metres of air space covered. A minimum charge of approximately 8 m<sup>3</sup> will be made.

The figures stated in Table 2.17 cover for erection and later dismantling and removal of external staging. For internal staging, inside tanks, engine rooms, etc. a third column is shown.

**Table 2.17** Erection of tubular steel scaffolding, complete with all around guard rails, staging planks and access ladders

<i>m<sup>3</sup></i>	<i>Man-hours/m<sup>3</sup></i>	
	<i>External</i>	<i>Internal</i>
Up to 10	3	5
10–100	2.5	4
100→	2	3

# 3

## Steel works

### Steel repairs

Applicable to Grade A shipbuilding steels

- Marking off the external area of hull plating on vertical side up to a height of 2 metres, cropping by hand burning and removal of all cropped plating.
- Dressing and preparation of plate edges of remaining external plating.
- Dressing and preparation of remaining internal structure.
- Supply and preparation of new flat steel plating, blasting to Sa2.5 and applying one coat of owner's supplied, holding primer.
- Transportation of new plate to vessel, fitting up, wedging in position, minor fairing and dressing of plate edges in the *immediate* vicinity, applying first runs of welding on one side, back gouging from other side and finally filling and capping to give fully finished weld.

Included in the tariff are:

- Only the work to the steelwork mentioned.
- Cleaning and chipping paint in the *immediate* vicinity of the repair area to facilitate hot cutting work.
- Cranage and transportation of the new and removed steelwork.

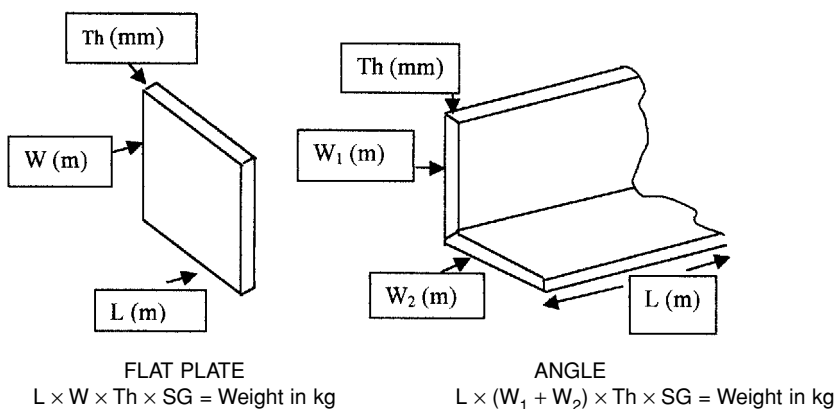
*Exclusions:*

- Staging for access. For staging charges see relevant section.
- All removals for access and later refitments.
- Tank cleaning and gas freeing.
- Cleaning in way of repairs other than the immediate vicinity as noted above.

- All final tests to repairs.
- Fairing of adjacent plates except as minor in the immediate vicinity as noted above.

Man-hours are per tonne of finished dimensions. The rates shown are for large quantities of steel renewals. The limit will be given by the shipyard and is dependent upon the size of the repair yard and the vessel. Assume the limit to be approximately 5 metric tonnes.

Shipowner's superintendents should be aware of the methods used by the shipyards of calculating steel weights, and this is illustrated below.



#### Flat steel plate

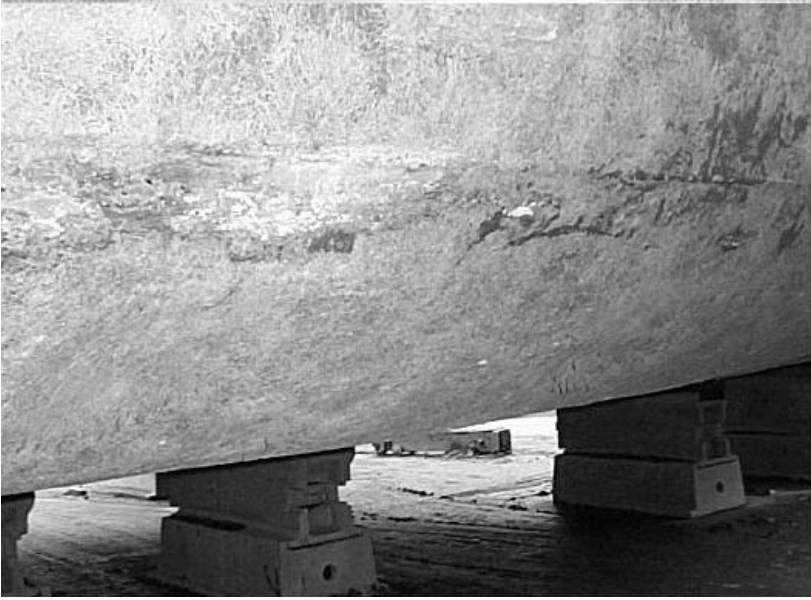
- For flat steel plates, measure the length in metres, the width in metres and the plate thickness in millimetres.
- Take the specific gravity of the material. For steel, the SG is 7.84, but it is common practice for estimators to use 8.
- To calculate the weight of the plate in kg:

Multiply  $L \times W \times Th \times SG$

For example:

Plate no.	L (m)	W (m)	Th (mm)	SG	Wt (kg)
1234	1	1	10	8	80





**Figure 6** Repair of damage to shell plating

### Steel angle

For flat steel angles, measure the length in metres, the widths of each leg in metres, and the common thickness in millimetres. Take the specific gravity of the material. For steel, the SG is 7.84, but it is common practice for estimators to use 8. To calculate the weight of the steel angle in kg:

$$\text{Multiply } L \times (W_1 + W_2) \times \text{Th} \times \text{SG}$$

For example:

Angle no.	L (m)	$W_1$ (m)	$W_2$ (m)	Th (mm)	SG	Wt (kg)
1111	1	0.150	0.175	10	8	26

For other steel sections, break each down into separate flat sections, calculate individually and finally add together to obtain the total weight of the section.

**Table 3.1** Steel works renewals

<i>Plate thickness (mm)</i>	<i>Man-hours per tonne</i>
Up to 6	250
8	245
10	240
12.5	230
16	220
18	210
20	200

<i>Correction for curvature</i>	<i>Factor increase</i>
Single	1.2
Double	1.3

<i>Correction for location – external</i>	<i>Factor increase</i>
Flat vertical side above 2 metres in height and requiring staging for access	1.1
Bottom shell, accessible areas (i.e. no removals of keel blocks)	1.12
Keel plate	1.4
Garboard plate	1.25
Bilge strake	1.25
Deck plating	1.15

<i>Correction for location – internal</i>	<i>Factor increase</i>
Bulkhead	1.2
Longitudinal/transverse above DB areas	1.25
Longitudinal/transverse below DB areas	1.35

---

*Other adjustment factors**Man-hour adjustment*

---

For fairing works:

Remove, fair and refit

80% of renewal price

Fair in place (if practicable)

50% of renewal price

---

*Note:* For high-tensile grade AH shipbuilding steels, increase rates by 10%.

## **Notes for steel works renewals**

- The steel weight is calculated from the maximum dimensions of each single plate and applying a specific gravity of 8.
- Staging for access and cramage is normally included within the price differences for repair locations. This should be checked with the contractor.
- A minimum quantity of steel renewals per area is usually stated in a ship repairer's tariff or conditions and is dependent upon the size of the shipyard and of the vessel. Below this minimum weight per area, the repairer will either charge anything up to double the standard tariff or will charge labour time and materials.
- If a plate is being joined to an adjacent plate of different thickness, then an additional labour charge will be made for taper grinding of the thicker plate to suit.



# 4 Pipe works

**Table 4.1** Pipe work renewals in schedule 40 and schedule 80 seamless steel

Removal of existing pipe and disposal ashore. Fabrication of new pipe in workshop to pattern of existing complete with new flanges, delivery on board of new pipe and installation in place with the supply of new soft jointing and standard material fastenings. Refitment of original clamps with new standard material fastenings.

*Inclusions:*

- Pipes in straight lengths, no branches, and with 2 flanges. Up to 50 mm nominal bore pipes can be screwed. Above 50 mm nominal bore pipes can be supplied with slip on welded flanges.
- Pipes readily accessible on deck or in engine rooms above floor plate level.

*Exclusions:*

- Access works.
- Removals for access. This also includes other pipes in the way.
- Any cleaning works.
- Heating coils. These are subject to special consideration.
- Any necessary staging or access works.

---

<i>Pipe dia (inches)</i>	<i>Man-hours per metre</i>	
	<i>Schedule 40 steel straight pipe</i>	<i>Schedule 80 steel straight pipe</i>
> 0.5	2	2.3
1	2.5	2.6
1.5	3.2	3.9
2	4.2	5

---

<i>Pipe dia (inches)</i>	<i>Man-hours per metre</i>	
	<i>Schedule 40 steel straight pipe</i>	<i>Schedule 80 steel straight pipe</i>
2.5	5.2	6.5
3	6.3	8
4	8.4	10
5	10.5	13
6	12.5	16
8	16.5	21
10	21	26
12	25	31
14	29	37
16	34	42
18	38	47
20	42	53
22	46	58
24	50	64

*Notes:*

A minimum charge to be applied for length of pipe of 3 metres.

Per bend add 30% of the value of the straight pipe.

Per branch add 80% of the value of the straight pipe.

Removal and refitment only of the pipe, charge is 40% the value of the pipe.

For pipes in other locations, the following additional charges to be made :

Inside double bottom tanks and duct keels      30%

Inside cargo or ballast tanks                      30%

Inside pump rooms                                      30%

In engine rooms below floor plate level      20%

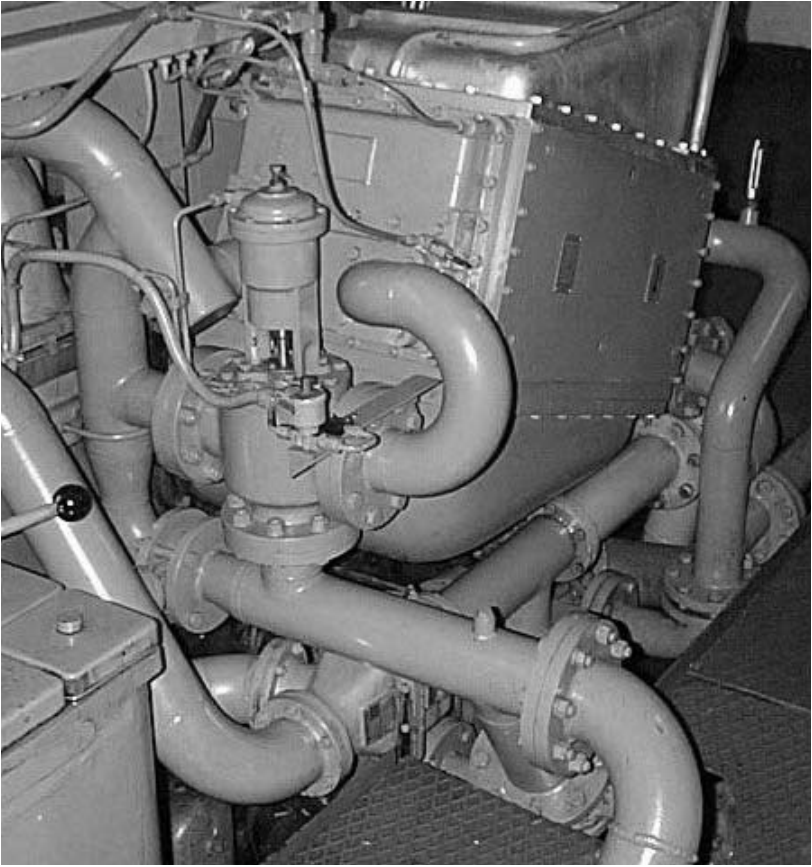
*Galvanizing*

Hot dip galvanizing after manufacture.

15% of finished steel pipes.

*Ready galvanized pipes*

20% of finished steel pipes.



**Figure 7** Main engine cooling-water pipes

*Copper pipes*

Pipe work renewals in copper. The rate for copper pipe renewals is estimated as 300% that of schedule 40 steel pipes.

**Table 4.2** Pipe clamps

Supply and fitting of new pipe clamps together with the supply of new standard material fastenings. Including welding of clamp to ship's structure.

<i>Pipe dia. (inches)</i>	<i>Man-hours per renewal of pipe clamp</i>
> 3	2
4	2.5
5	3
6	3.5
8	4
10	5
12	6
14	8
16	9
18	11
20	12
22	13
24	14



**Table 4.3** Spool pieces

Removal of existing steel penetration pieces from bulkheads or decks, fabrication and installation of new straight, seamless steel, penetration pieces with two flanges and one flat bulkhead compensation flange welded in place. Including supply and installation of soft joint and standard material fastenings.

<i>Pipe dia. (inches)</i>	<i>Man-hours per spool piece</i>	
	<i>Schedule 40 steel straight pipe</i>	<i>Schedule 80 steel straight pipe</i>
> 0.5	2	2.5
1	3.5	4.3
1.5	5.5	6.8
2	9	11.2
2.5	10	12.5
3	12.5	15.5
4	15	18.7
5	17	21
6	19	24
8	29	36
10	35	44
12	42	52
14	51	64
16	62	77
18	73	91
20	85	105
24	95	118

*Note:* The same conditions apply to these spool pieces as for pipe renewals.



# 5

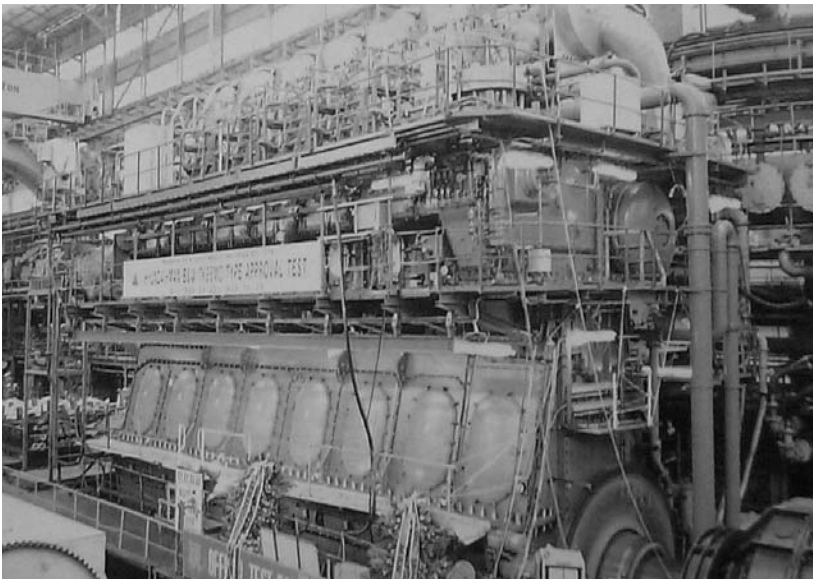
## Mechanical works

In the following mechanical works it is assumed that all are *in situ* overhauls and that the items considered are all accessible for the work to be performed.

If any item is to be removed ashore to the workshops then an assessment of the work involved must be made and the rates given amended accordingly. This is considering removals to permit transportation of the item from the ship and their later refitment, on completion of the reinstallation.

## Overhauling diesel engines (single-acting, slow-running, two-stroke, cross-head)

In the overhauling of large main propulsion engines, it is assumed that the ship will provide all the specialized equipment necessary. This refers to heavy-duty equipment which is normally supplied by the engine manufacturer and also any special hydraulic tensioning equipment for fastenings. In main engines, it is assumed that there are lifting devices such as overhead beams, runner blocks and/or overhead cranes.



**Figure 8** A main propulsion diesel engine

**Table 5.1** Top overhaul

Disconnect and remove cylinder head, withdraw piston, remove piston rings, clean, calibrate and reassemble as before using all owner's supplied spares.

<i>Cylinder bore (mm)</i>	<i>Man-hours per cylinder</i>
500	67
550	70
600	75
650	80
700	87
750	95
800	105
850	115
900	125
950	137
1000	150

### **Cylinder cover**

Disconnect and remove cylinder head, clean all exposed parts, including piston crown and reassemble as before using all owner's supplied spares.

Assume as 60% the rate of top overhaul rate.

**Table 5.2** Cylinder liners – 1

Withdrawing of cylinder liner, cleaning exposed areas as far as accessible, installing of new, owner's supplied liner and rubber seals.

<i>Cylinder bore (mm)</i>	<i>Man-hours per cylinder</i>
500	60
550	62
600	67
650	72
700	77
750	82
800	90
850	97
900	107
950	120
1000	135

*Note:* Assuming that cylinder head, piston and piston rod are already removed as part of the top or complete overhaul.

**Table 5.3** Bearing survey – 1

Opening up for inspection, exposing both halves, cleaning, calibrating and presenting for survey. On completion, reassembling as before.

<i>Cylinder bore (mm)</i>	<i>Man-hours/bearing</i>		
	<i>Cross-head</i>	<i>Crank pin</i>	<i>Main</i>
500	47	32	45
550	50	35	48
600	52	37	50
650	55	40	52
700	57	42	55
750	58	45	56
800	60	47	59
850	62	50	63
900	65	52	67
950	68	55	72
1000	72	57	76
1050	75	60	80

*Note:* For exposing top half of bearing shell only, charge 60% of above rates.

**Table 5.4** Crankshaft deflections – 1

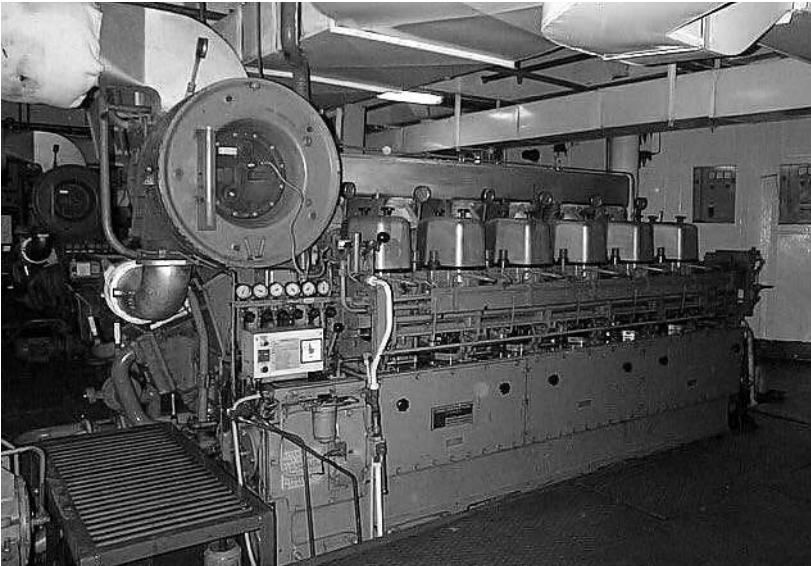
- (a) Opening up crankcase door for access works and refitting on completion.
- (b) Setting up deflection indicator gauge, turning engine, using ship's powered turning gear and recording observed readings. Removing equipment and closing up crankcase door on completion.

<i>Cylinder bore (mm)</i>	<i>(a) Deflections Man-hours per unit</i>	<i>(b) Crankcase doors Man-hours per door</i>
> 750	4	4
750–850	4.5	4.5
850–950	4.5	5
950–1050	5	5.5



## Overhauling diesel engines (single-acting, slow-running, in-line, four-stroke, trunk)

In the overhauling of large main propulsion engines it is assumed that the ship will provide all the specialized equipment necessary. This refers to heavy-duty equipment which is normally supplied by the engine manufacturer and also any special hydraulic tensioning equipment for fastenings. In main engines, it is assumed that there are lifting devices such as overhead beams, runner blocks and/or overhead cranes.



**Figure 9** A ship's medium-speed main engine

**Table 5.5** Four-stroke trunk-type main engines

- (a) *Cylinder head*: Disconnecting and removing cylinder head, cleaning all exposed parts, including piston crown and reassembling as before using all owner's supplied spares. Disconnecting and removing 2 in number air inlet valves and 2 in number exhaust valves, including exhaust valve cage with removable seats. Cleaning and decarbonizing valves, cages and head as far as accessible, lightly hand grinding valves for examination only of seating areas.

*Clarifications:*

Work on the seats may be protracted so is excluded. This could include changing seat inserts, machining and grinding/lapping seats. It will require establishing and should be subject to work assessment.

- (b) *Top overhaul*: Disconnect and remove one pair of crankcase doors, disconnect bottom end bearing fastenings. Disconnect and remove cylinder head, withdraw piston, remove piston rings, clean, calibrate and reassemble as before using all owner's supplied spares.
- (c) *Piston gudgeon pin*: Drawing out gudgeon pin from removed piston, clean all exposed parts, calibrate and record and reinstall pin as before. Any spares to be owner's supply.

<i>Cylinder bore (mm)</i>	<i>(a) Man-hours per cylinder head</i>	<i>(b) Man-hours per cylinder</i>	<i>c) Man-hours per piston pin</i>
100	16	16	4
150	20	20	4
200	22	24	6
250	24	32	8
300	32	36	10
350	36	40	12
400	40	48	14
450	48	56	16
500	56	64	18
550	64	72	20
600	72	80	24

*Note:* For Vee bank engines add 20% per unit.

**Table 5.6** Cylinder liners – 2

Withdrawing of cylinder liner, cleaning and painting exposed areas as far as accessible, installing of new, owner's supplied liner, or existing liner, complete with owner's supplied rubber seals and top joint. Attending hydrostatic test carried out by ship's staff.

<i>Cylinder bore (mm)</i>	<i>Man-hours per cylinder</i>
100	16
150	20
200	24
250	28
300	32
350	40
400	44
450	48
500	52
550	56
600	60

**Table 5.7** Bearing survey – 2

Opening up for inspection, exposing both halves, cleaning, calibrating and presenting for survey. On completion, reassembling as before.

---

<i>Cylinder bore (mm)</i>	<i>Man-hours per bearing</i>	
	<i>Crank pin</i>	<i>Main</i>
100	6	4
150	8	6
200	10	8
250	14	10
300	16	12
350	18	14
400	20	16
450	24	18
500	28	20
550	32	24
600	36	32

---

*Note:* For exposing top half of bearing shell only, charge 60% of above rates.

**Table 5.8** Crankshaft deflections – 2

- (a) Opening up crankcase door for access works and refitting on completion.
- (b) Setting up deflection indicator gauge, turning engine, using ship's powered turning gear and recording observed readings. Removing equipment and closing up crankcase door on completion.

<i>Cylinder bore (mm)</i>	<i>(a) Crankcase doors Man-hours per door</i>	<i>(b) deflections Man-hours per unit</i>
> 100	4	4
100–200	4	6
200–300	4	8
300–400	6	12
400–500	8	16
500–600	8	20

# Valves

**Table 5.9** Overhauling valves

Opening up hand-operated, globe and gate valve for *in situ* overhaul, by disconnecting and removing cover, spindle and gland, cleaning all exposed parts, hand grinding of globe valve, light hand scraping of gate valve, testing bedding, painting internal exposed areas and reassembling with new cover joint and repacking gland with conventional soft packing.

For low-pressure valves, below 10 kg/cm<sup>2</sup>, the tariff is the same as for sea valves. This also applies to the increases for location.

The following increases can be applied according to the pressure:

<i>Pressure (kg/cm<sup>2</sup>)</i>	<i>Increase over sea valve tariff (%)</i>
10	100
16	120
20	140
40	160
60	180
80	200

*Notes:*

Insulation renewal excluded.

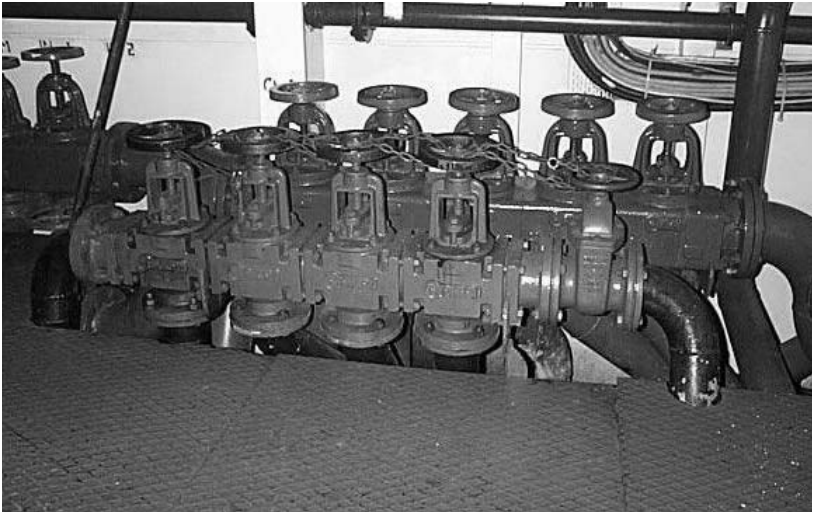
Pressure testing *in situ* using ship's pump; additional 5 hours per valve.

Pressure testing *in situ* using contractor's pump; additional 7 hours per valve.

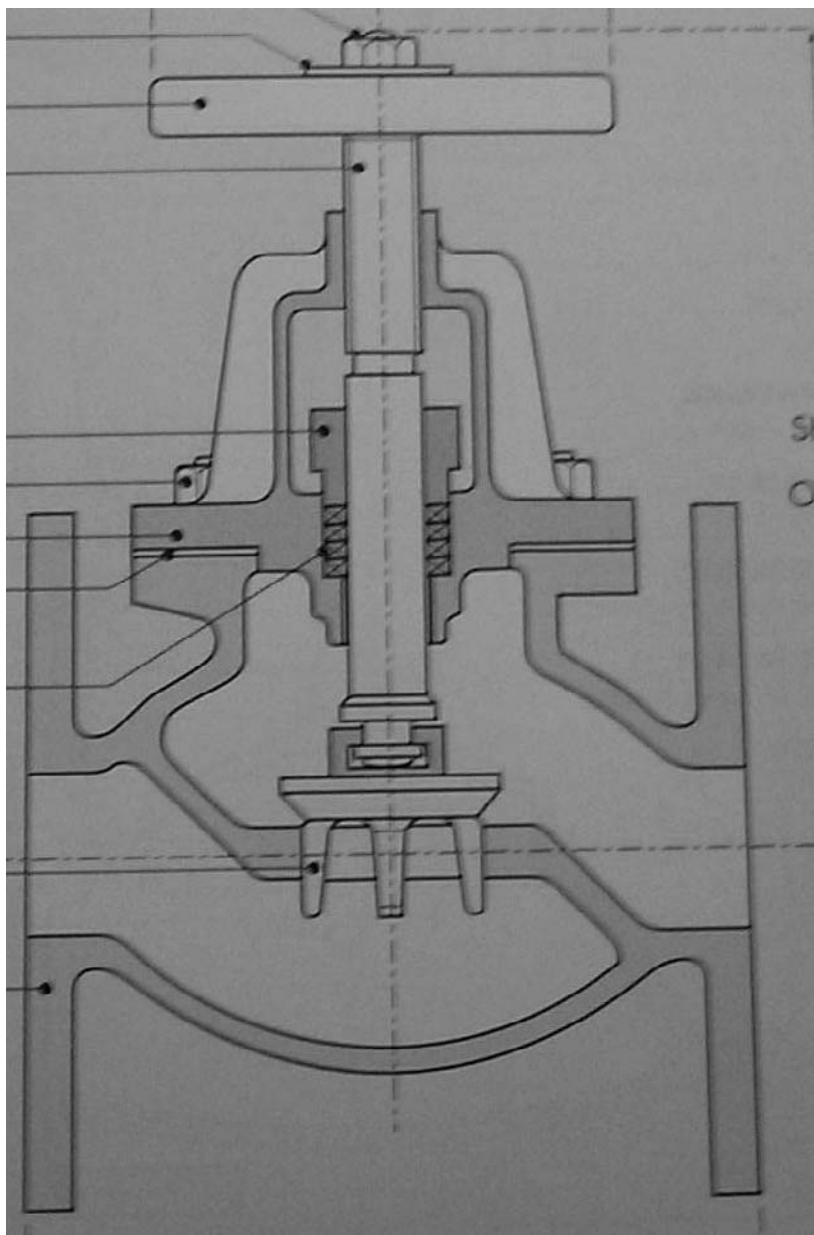
Removal and overhaul ashore in workshop; double the *in situ* rate.

Metallic or special packings, owner's supply; additional 2 hours per valve.

Rates apply to hand-operated valves only.



**Figure 10** A ballast system valve chest



**Figure 11** A standard screw-lift globe valve



## Condensers

**Table 5.10** Main condenser

Opening up inspection doors, cleaning sea water end boxes and tubes by air or water lance, test and reclosing.

<i>SHP</i>	<i>Man-hours</i>
12 000	120
15 000	140
20 000	160
22 000	180
24 000	200
30 000	220

*Note:* Excluding stagings for access.

## Heat exchangers

**Table 5.11** Overhauling heat exchanger

- (a) Disconnecting and removing end covers, cleaning water side end plates and water boxes and tubes by air or water lance, test and reclosing.
- (b) *Hydraulic testing:* Disconnecting and removing secondary side pipeworks. Providing necessary blanks and installing. Filling with fresh water and applying necessary hydraulic pressure test. Draining on completion, removing blanks and installing pipes as before.

Cooling water surface area, m <sup>2</sup>	Man-hours	
	(a)	(b)
>3	16	8
5	20	12
10	24	12
15	32	12
20	36	16
30	40	16
50	44	16
100	56	16
150	64	20
200	80	20
250	88	20
300	96	24
350	108	24
400	120	32

*Notes:*

Applicable for standard tube type heat exchanger. For plate type, cleaning rates to be increased by 120%.

Including renewal of owner's supplied internal sacrificial anode on primary side. Including painting with owner's supplied painting composition on primary side. Excluding any repairs.

Excluding draining secondary side and associated cleaning works.

For ultrasonic cleaning, special considerations to apply.

## Turbines

**Table 5.12** Main steam turbines

Opening up for inspection, disconnecting flexible coupling and lifting up rotor, examining bearings, coupling and rotor, checking clearances, cleaning jointing surfaces and reclosing.

<i>SHP</i>	<i>Man-hours</i>	
	<i>HP</i>	<i>Turbine</i>
12 000	180	210
15 000	220	250
20 000	250	280
22 000	260	300
24 000	270	310
26 000	280	320
32 000	350	400
36 000	430	480

*Note:* Removal of any control gear is not included. If applicable, increase rates by 30%.

**Table 5.13** Flexible coupling

Disconnecting guard, opening up coupling, cleaning, presenting for survey and examination, measuring and recording clearances, closing up. Excluding any repairs, renewals or realignment works.

<i>SHP</i>	<i>Man-hours each</i>
12 000	30
15 000	32
20 000	34
22 000	35
24 000	36
26 000	37
28 000	38

<i>SHP</i>	<i>Man-hours each</i>
30 000	40
32 000	42
34 000	44
36 000	46

*Note:* Removals for access are excluded.

**Table 5.14** Auxiliary steam turbines

Opening up for *in situ* inspection, disconnecting flexible coupling and lifting up turbine rotor, examine bearings, coupling and rotor, check clearances, clean jointing surfaces and reclose.

*Turbo alternator turbine*

<i>kw</i>	<i>Man-hours each</i>
400	170
700	180
1000	190
1500	200
2000	230
2500	270

*Cargo pump turbine*

<i>Tonnes/hour (of pump)</i>	<i>Man-hours each</i>
>1000	100
1500	110
2000	125
2500	145
3000	150
4000	165
5000	185

### *Feed pump turbine*

<i>SHP</i>	<i>Man-hours each</i>
12 000	42
15 000	48
20 000	56
24 000	60
30 000	64
36 000	68

*Notes:*

Assume pump and turbine to be horizontal.

For vertical pump, increase by 10%.

Excluding dynamic balance checking.

**Table 5.15** Water-tube boiler feed pumps (multi-stage type)

Disconnect and remove upper half of pump casing, disassemble internals and draw shaft. Clean, inspect and calibrate all parts. Rebuild rotor, set clearances and refit upper half of casing. All spares to be owner's supply.

<i>SHP</i>	<i>Man-hours each</i>
12 000	48
15 000	52
20 000	56
24 000	60
30 000	64
36 000	68

*Notes:*

The above figures apply to overhaul of pump only. If carried out in conjunction with overhaul of turbine, then reduce figures by 10%.

All access works and insulation works included.

**Table 5.16** Oil tanker cargo pumps

Disconnecting and removing top half of casing, releasing shaft flexible coupling from drive, slinging and removing impeller, shaft and wearing rings.

Withdrawing impeller, shaft sleeve and bearings from shaft.

Cleaning all exposed parts, calibrating and reporting.

Reassembling as before using owner's supplied parts, jointing materials and fastenings.

<i>Tonnes/hour</i>	<i>Man-hours each</i>
>1000	90
1500	100
2000	110
2500	125
3000	140
4000	150
5000	160

*Notes:*

Horizontal centrifugal single-stage type pumps.

For vertical pumps, increase figures by 15%.

## Compressors

**Table 5.17** Air compressor (two-stage type)

Disconnecting and removing cylinder heads, releasing bottom end bearings, withdrawing pistons.

Opening up main bearings, including removing crankshaft on compressors with removable end plate.

Dismantling cylinder head air suction and delivery valves

Cleaning all parts, calibrating and reporting condition.

Reassembling all as before using owner's supplied spares as required.

Cleaning of attached air inter-cooler, assuming accessible.

<i>Capacity (m<sup>3</sup>/hour)</i>	<i>Man-hours per machine</i>
10	50
20	55
50	60
100	70
200	80
300	90
400	100
500	120
600	150

*Note:* For three-stage compressors, charge rate to be increased by 150%.

## Receivers

**Table 5.18** Air receivers

Opening up manholes, cleaning internal spaces for inspection, painting internal areas and closing manholes with owner's supplied jointing materials.

<i>Capacity (m<sup>3</sup>)</i>	<i>Man-hours per receiver</i>
<1	16
5	20
10	24
15	28
20	32
30	36
40	40
50	48
60	52

# Pumps

**Table 5.19** Horizontal centrifugal-type pumps

Disconnecting and removing top half of casing, releasing shaft coupling from motor drive, slinging and removing impeller, shaft and wearing rings.

Withdrawing impeller, shaft sleeve and bearings from shaft.

Cleaning all exposed parts, calibrating and reporting.

Reassembling as before using owner's supplied parts, jointing materials and fastenings.

<i>Capacity (m<sup>3</sup>/hour)</i>	<i>Man-hours per pump</i>
5	20
10	24
20	32
50	34
100	40
200	48
300	52
500	56
750	60
1000	64
1500	72

*Notes:*

Assuming single-stage pump.

Assuming driven by an attached electric motor.

For multi-stage turbine-driven pumps, see the rates given for water-tube boiler feed pumps and assess accordingly.





**Figure 12** A vertical electric-driven centrifugal water pump

**Table 5.20** Reciprocating-type pumps, steam driven –  
(a) simplex, (b) duplex

Disconnecting and removing steam cylinder top cover, releasing steam piston, withdrawing, removing piston rings, cleaning, calibrating and recording.

Disconnecting and removing slide valve cover, removing valves, cleaning and presenting for survey.

Disconnecting and removing bucket cover, releasing bucket, withdrawing, removing bucket rings, cleaning, calibrating and recording.

Opening up suction and delivery valve chest, removing valves and springs, cleaning, grinding and presenting for survey.

Fully reassembling complete pump renewing all jointing and repacking glands with owner's supplied conventional soft packing.

Excluding all repairs and renewals.

<i>Capacity of pump (m<sup>3</sup>/hour)</i>	<i>Man-hours</i>	
	<i>(a) Simplex pump</i>	<i>(b) Duplex pump</i>
50	64	112
100	80	140
200	104	182
300	120	210
400	144	252
500	160	280

**Table 5.21** Reciprocating-type pumps, electric motor driven –  
(a) simplex, (b) duplex

Disconnecting and removing electric motor aside.

Disconnecting and removing bucket cover, releasing bucket, withdrawing, removing bucket rings, cleaning, calibrating and recording.

Opening up suction and delivery valve chest, removing valves and springs, cleaning, grinding and presenting for survey.

Fully reassembling complete pump renewing all jointing and repacking glands with owner's supplied conventional soft packing.

Reinstalling electric motor and making terminals.

Excluding all repairs and renewals.

<i>Capacity of Pump (m<sup>3</sup>/hour) (a) Simplex pump</i>	<i>Man-hours</i>	
	<i>(b) Duplex pump</i>	
5	32	56
10	40	72
20	48	80
30	56	96
40	64	112
50	72	120

**Table 5.22** Gear-type pumps (helical and tooth)

Disconnecting and removing pump, opening up end covers, withdrawing gear units, cleaning, calibrating, recording clearances and presenting for survey.

Fully reassembling pump renewing all jointing and repacking glands with owner's supplied packing or seals.

<i>Capacity (m<sup>3</sup>/hour)</i>	<i>Man-hours per pump</i>
1	16
5	24
10	28
20	32
50	48
100	56
200	64
300	72
400	80
500	88

**Table 5.23** Steering gear

Variable delivery constant speed electro-hydraulic pumps.  
Disconnecting pump and removing for *in situ* overhaul. Opening up pump, full dismantling, cleaning calibrating and presenting for survey. Full reassembling using owner's supplied spares and reinstalling in place.

<i>Capacity (HP)</i>	<i>Man-hours per pump</i>
3	24
5	32
8	36
10	42
15	48
20	56
25	64
30	72

## Boilers (main and auxiliary)

**Table 5.24** Cleaning of water-tube boilers

Opening up gas side of boiler, normal clean all fire side surfaces using high-pressure fresh water. Removing drain plates from gas side of boiler to permit drainage of water to bilges and later refitment. Closing up gas sides as before.

Opening up water side of boiler by removing manhole doors from water drums, hosing down with fresh water and reclosing.

<i>Vessel SHP</i>	<i>Single boiler</i>	<i>Man-hours</i>	
		<i>Two boilers</i>	<i>Auxiliary boiler</i>
20 000	453	748	340
22 000	464	766	350
24 000	476	818	360
26 000	504	857	365

*Notes:*

Allowance made for 10 access doors, 10 hand-hole doors and 2 manholes per boiler.

Special cleaning of super-heater tubes to be charged additional.

Extra dirty boilers to be charged additional.

Staging not included.

For hydraulic testing of boiler using fresh water; 10% additional charge.

Excluding economizer and superheater.



# 6

## Electrical works

**Table 6.1** Insulation resistance test on all main and auxiliary, lighting and power circuits and report

<i>Vessel DWT</i>	<i>Man-hours</i>
<5 000	24
>5 000	40
10 000	48
20 000	56
50 000	64
75 000	64
100 000	72

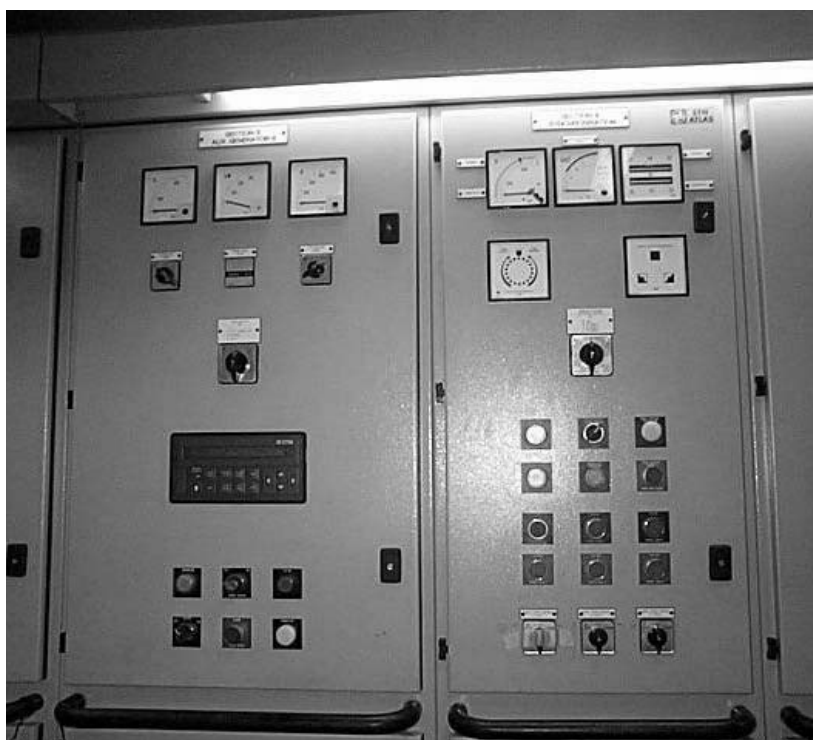


**Figure 13** A main electrical switchboard in a machinery control room

**Table 6.2** Switchboard

Cleaning behind switchboard, examining all connections and retightening as necessary, reporting conditions.

<i>Vessel DWT</i>	<i>Man-hours</i>
< 5 000	32
> 5 000	40
10 000	50
20 000	75
30 000	100



**Figure 14** A generator control panel in a main switchboard



**Table 6.3** Electric motors

Disconnecting motor from location, transporting motor ashore to workshop for rewinding, and, on completion, returning on board, refitting in original position and reconnecting original cables.

Receiving motor in workshop, dismantling, cutting out all stator coils, removing rotor bearings and cleaning all parts. Forming new stator coils in copper wire assembling using new insulation and varnish. Baking dry in oven, dip varnishing and rebaking in oven. Reassembling all parts, fitting new standard type ball or roller bearings to rotor and testing in workshop.

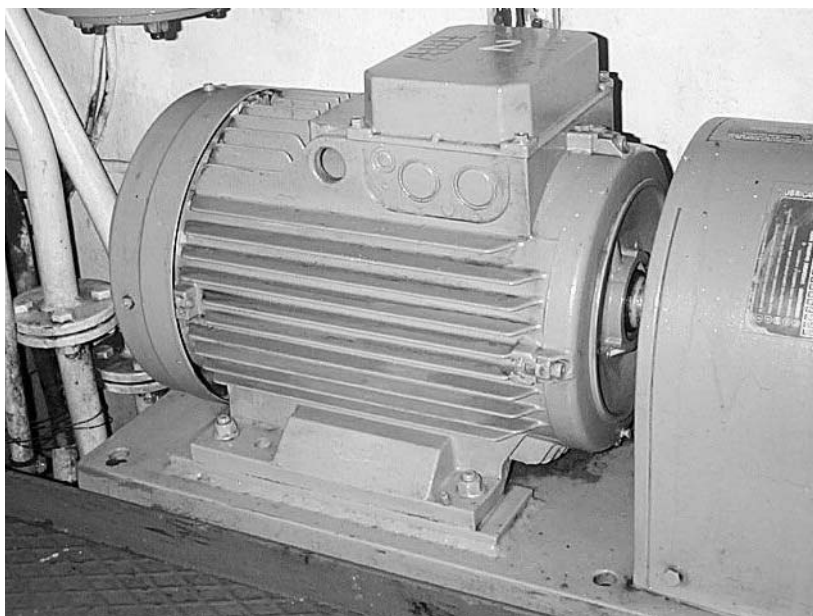
<i>Capacity (kW)</i>	<i>Man-hours</i>
<3	24
5	30
10	38
15	40
20	40
30	48
40	50
50	60
60	75
75	80
100	90

*Notes:*

Excluding rebalancing of rotor.

These man-hours are for work on AC motors only and these are assumed to be single-speed, squirrel-cage induction motors, three-phase, 380/440 volts, 50/60 Hz, 1440/1760 rpm, and with Class B insulation.

Excluding: staging for access to location, removals in way, cleaning in way and crange.



**Figure 15** A standard AC induction electrical motor

**Table 6.4** Electric motors for winch/windlass/crane

Disconnecting motor from location, transporting motor ashore to workshop for rewinding, and, on completion, returning on board, refitting in original position and reconnecting original cables.

Receiving motor in workshop, dismantling, cutting out all stator coils, removing rotor bearings and cleaning all parts. Forming new stator coils, for both stators, in copper wire assembling using new insulation and varnish. Baking dry in oven, dip varnishing and rebaking in oven. Reassembling all parts, fitting new standard type ball or roller bearings to rotor and testing in workshop.

<i>Capacity (kW)</i>	<i>Man-hours</i>
20	160
30	200
40	220
50	240
60	300
75	320
100	360

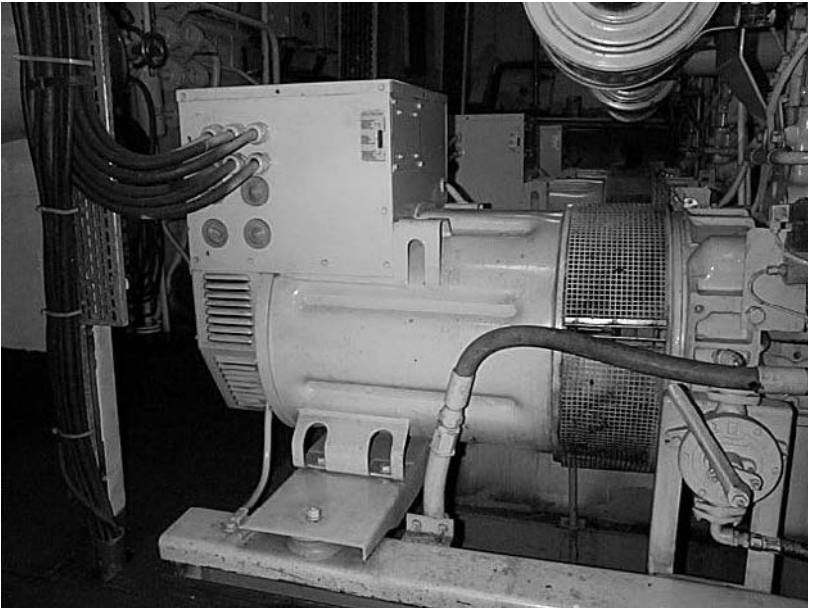
**Notes:**

These man-hours are for work on AC motors only and these are assumed to be triple-speed, three-phase, 380/440 volts, 50/60 Hz, double rotor/stator, squirrel-cage induction motors with integral brake with Class B insulation. Excluding rebalancing of rotor.

**Table 6.5** Electric generators

Disconnecting and removing rotor ashore to workshop, full cleaning, baking in oven, drying, varnishing, rebaking in oven, testing, reassembling and reconnecting in place on board.

<i>KVA</i>	<i>Man-hours</i>
<50	75
51–100	90
101–200	100
300	140
400	160
500	175
600	190
750	200
1000	220



**Figure 16** A ship's main diesel-driven AC alternator

**Table 6.6** Installation of electric cables. Man-hours for installations per 100 metres of unarmoured, flexible, multi-core, rubber-insulated cable

Area (mm <sup>2</sup> )	2 core	3 core	4 core	5 core	6 core	7 core	9 core	12 core
0.5	21	25	30	30	34	37	–	–
1	23	27	33	34	38	41	–	–
1.5	25	33	49	57	65	82	–	–
2.5	43	49	54	66	78	90	106	122
4	48	53	61	72	89	106	129	150
6	54	61	66	79	–	115	–	–
10	61	72	77	–	–	–	–	–

*Including:*

- Handling and installing in place numbers of lengths as indicated of electric cable.
- Stripping back cable and insulation and preparing for connecting.
- Connecting to existing junction boxes in existing cable tray with new cable ties.
- Man-hours shown are for installation of exposed cables up to heights of 3 metres on exposed flat surfaces in existing cable trays.

*Exclusions:*

- Material costs. These figures show man-hour charges only.
- Any removals of existing, or old cable. These man-hours are for new installations only.
- Installation of scaffolding and any access work. These to be covered in separate sections.

*Notes:*

Man-hours shown are for the installation of a single length of cable.  
 For the installation of a parallel, second length of electric cable, reduce by 15%.  
 For the installation of a parallel, third length of electric cable, reduce by 25%.  
 For the installation of a parallel, fourth length of electric cable, reduce by

30%.

For the installation of a parallel, fifth and subsequent length of electric cable, reduce by 35%.

For additional height, increase tariff as follows:

3–5 metres; increase by 5%

5–8 metres; increase by 10%

8–12 metres; increase by 15%

**Table 6.7** Man-hours for installations per 100 metres of rubber-insulated, or similar, armoured flexible cable, braided in bronze or steel, basket weave

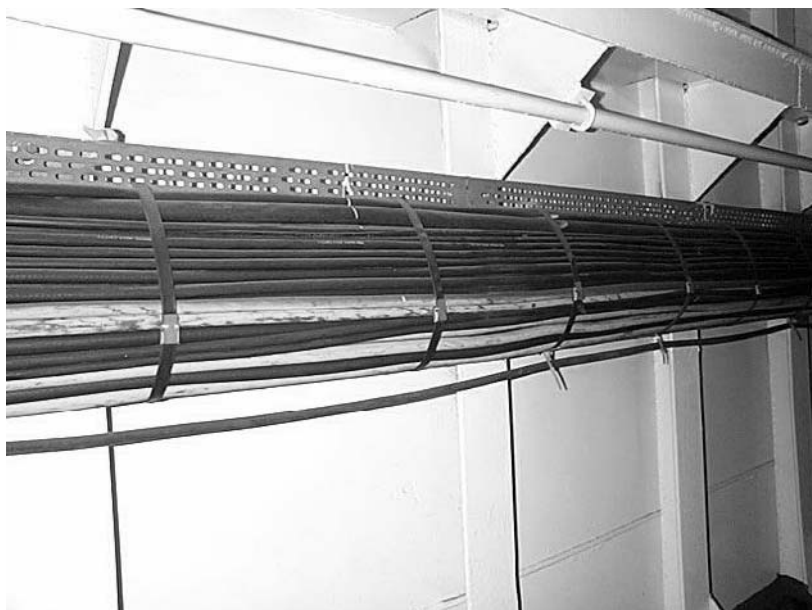
<i>Area (mm<sup>2</sup>)</i>	<i>2 core</i>	<i>3 core</i>	<i>4 core</i>	<i>5 core</i>	<i>6 core</i>
1	28	36	40	45	51
1.5	29	39	51		
2.5	46	59	67		
4	53	67	74		
6	74	86	92		
10	82	90	94		
16	86	93	99		
25	90	95	109		
35	95	99	120		
50	99	112	141		
70	104	132	164		
95	109	141	180		
120	128	167	205		
150	132	176	218		
185	154	205	256		
240	196	261	326		
300	254	352	440		

*Including:*

- Handling and installing in place numbers of lengths as indicated of electric cable.
- Stripping back cable and insulation and preparing for connecting.
- Connecting to existing junction boxes in existing cable tray with new cable ties.
- Man-hours shown are for installation of exposed cables up to heights of 3 metres on exposed flat surfaces in existing cable trays.

*Exclusions:*

- Material costs. These figures show man-hour charges only.
- Any removals of existing, or old cable. These man-hours are for new installations only.



**Figure 17** Grouping of electric cables on a cable tray

- Installation of scaffolding and any access work. These to be covered in separate sections.

*Notes:*

Man-hours shown are for the installation of a single length of cable.

For the installation of a parallel, second length of electric cable, reduce by 15%.

For the installation of a parallel, third length of electric cable, reduce by 25%.

For the installation of a parallel, fourth length of electric cable, reduce by 30%.

For the installation of a parallel, fifth and subsequent length of electric cable, reduce by 35%.

For additional height, increase tariff as follows:

3–5 metres; increase by 5%

5–8 metres; increase by 10%

8–12 metres; increase by 15%



**Table 6.8** Man-hours for installations per 100 metres of rubber-insulated, or similar, armoured flexible cable, braided in bronze or steel, basket weave. Single-core cable (for use with multi-runs of higher cable sizes)

Area (mm <sup>2</sup> )	1 wire	2 wires	3 wires	4 wires	5 wires
50	80	88	102	122	157
70	92	102	117	140	182
95	108	119	137	163	213
120	125	137	157	189	246
150	132	145	166	200	260
185	148	163	188	225	293
240	174	191	220	263	342
300	231	254	293	351	456
380	281	310	356	427	556

*Including:*

- Handling and installing in place numbers of lengths as indicated of electric cable.
- Stripping back cable and insulation and preparing for connecting.
- Connecting to existing junction boxes in existing cable tray with new cable ties.
- Man-hours shown are for installation of exposed cables up to heights of 3 metres on exposed flat surfaces in existing cable trays.

*Exclusions:*

- Material costs. These figures show man-hour charges only.
- Any removals of existing, or old cable. These man-hours are for new installations only.
- Installation of scaffolding and any access work. These to be covered in separate sections.

*Notes:*

Man-hours shown are for the installation of single runs of cable without joins. For additional height, increase tariff as follows:

- 3–5 metres; increase by 5%
- 5–8 metres; increase by 10%
- 8–12 metres; increase by 15%

**Table 6.9** Man-hours for installations of cable tray per metre (perforated steel cable tray, including brackets and fastenings)

<i>Size (mm)</i>	<i>Man-hours per metre</i>
75	0.95
100	1.05
150	1.25
225	1.50
300	1.75
Bends	Each bend to be rated at three times that of 'per metre'

*Including:*

- Handling and installing in place numbers of lengths as indicated of electric cable tray.
- Man-hours shown are for installation of exposed cable tray up to heights of 3 metres on exposed flat surfaces.

*Exclusions:*

- Material costs. These figures show man-hours charges only.
- Any removals of existing, or old cable tray. These man-hours are for new installations only.
- Installation of scaffolding and any access work. These to be covered in separate sections.

*Notes:*

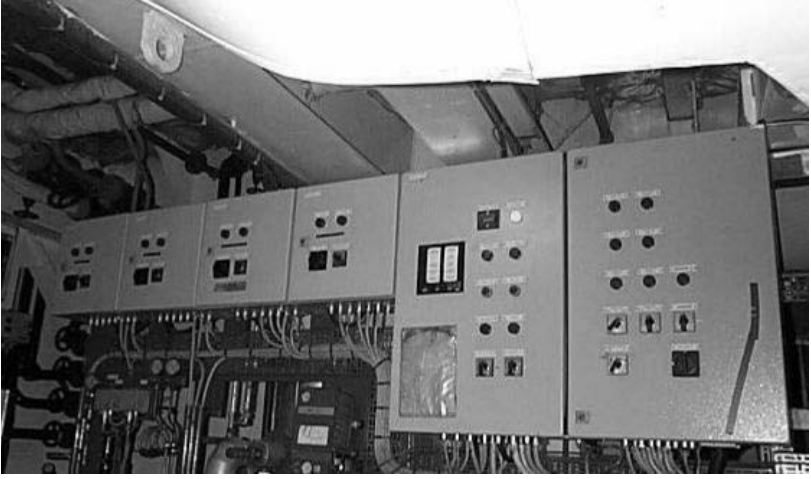
Man-hours shown are for the installation of a single length of cable tray.

For additional height, increase tariff as follows:

3–5 metres; increase by 5%

5–8 metres; increase by 10%

8–12 metres; increase by 15%



**Figure 18** Control panels of a ship's auxiliary equipment

**Table 6.10** Man-hours for installations of electric cable conduit per metre (galvanized steel conduit, including brackets and fastenings)

<i>Size (mm)</i>	<i>Man-hours per metre</i>
20	0.72
25	0.78
32	1.14

*Including:*

- Handling and installing in place numbers of lengths as indicated of electric cable conduit.
- Man-hours shown are for installation of exposed cable conduit up to heights of 3 metres on exposed flat surfaces.

*Exclusions:*

- Material costs. These figures show man-hours charges only.
- Any removals of existing, or old cable conduit. These man-hours are for new installations only.
- Installation of scaffolding and any access work. These to be covered in separate sections.

*Notes:*

Man-hours shown are for the installation of a single length of cable conduit.

For additional height, increase tariff as follows:

3–5 metres; increase by 5%

5–8 metres; increase by 10%

8–12 metres; increase by 15%

## 7

## General works

**Table 7.1** General cleaning

- (a) Berthing vessel alongside special tank cleaning berth.
- (b) Receiving of bilge water or slops into shore facility using ship's pumps.
- (c) Removing sludge deposits from tanks and disposal ashore.

<i>(a) Man-hours (minimum charge)</i>	<i>(b) Man-hours per 20 tonnes (minimum)</i>	<i>(c) Man-hours per 10 tonnes (minimum)</i>
150	1.5	105

**Notes:**

- (a) This rate may vary depending upon shipyard. An hourly rate will apply with a minimum charge being levied, as shown in the figure above.
- (b) The rate for collection of bilge water or slops will depend upon the receiving facility and the rate levied for (a). For collection by road tankers, separate quote should be requested.

**Table 7.2** Tank cleaning

- (a) Removal of tank manhole cover for access and refitting with new cover joint.  
 (b) Removing dirt and debris cubic metre.  
 (c) Hand cleaning of bilge areas or inside tanks per 10 square metres.  
 (d) Hand scraping of internal steel areas per 10 square metres.

<i>Type of tank</i>	<i>Man-hours</i>			
	<i>(a)</i>	<i>(b)</i>	<i>(c)</i>	<i>(d)</i>
Fresh water	6	0.70	1.25	1.0
Ballast water	6	6.3	1.60	1.70
Fuel oil (MGO)	6	10.5	4.25	–

**Table 7.3** Tank testing

- (a) Tank testing by low pressure compressed air, per tonne capacity.  
 (b) Tank testing by filling with sea water, per tonne capacity.

<i>Tank capacity (m<sup>3</sup>)</i>	<i>Man-hours</i>	
	<i>(a)</i>	<i>(b)</i>
< 5	0.25	0.32
5–20	0.20	0.25
20–50	0.16	0.20
50–100	0.14	0.16

*Special notes on quotations:*

- Obtain a copy of the ship repair contractor's standard tariff rates.
- Request the ship repair contractor to agree that extra work will be priced in accordance with produced standard tariffs, or other agreed rates.
- Ensure that conditions of contract are agreed before placing of contract. If not, then it will be assumed that the shipyard's standard conditions apply, which may not always be suitable to the ship owner.

# 8

## Planning charts

The following is not necessarily required by ship owner's superintendents, but may prove useful to give an indication as to a method of determining the timescale and daily loadings for carrying out the repairs.

In forward planning and scheduling it is imperative that the planned timescale for repair periods are adhered to strictly in order to avoid knock-on effect delays. A ship repair yard therefore must be aware, well in advance, of the total work load and resources needed to complete each job. This is where the man-hour totals for each trade are required and, very importantly, the work rate of each trade.

The graphs shown in this section have been compiled from historical data by shipyard workload planners and are actual graphs derived, and used by, a large international ship repair yard to assist the forward planning of the yard. The yard's planners must ensure that sufficient resources are available to carry out the workload, looking up to 3 months ahead and this is their method of doing so. Using this process the planners can arrange for the necessary resources to be available well ahead of the scheduled repair period and have these available on arrival of the vessel.

Using a prepared ship repair specification, a planner will carry out an analysis of the work and produce a critical path. This critical path determines the timescale of the repair period, so any way in which the timescale of a job within the critical path may be reduced will reduce the overall timescale. Additional resources will be used on these jobs to ensure their earlier completion, so then this is the way in which the total timescale is reduced.

Using the foregoing tables in this book, the estimator can forecast the total number of man-hours per trade for the specified work. Knowing the yard's resources, the next job is to develop the daily work rate for each trade.

A graph of the work rate for each trade is available with the

yard's planners, and using the graphs, the planner can estimate the timescale to complete the known works.

In carrying out a planned repair period, the planner will consider certain aspects of priority.

As an example, consider a vessel entering the dry dock and a number of trades have planned work in the dry dock area. A very high work rate is necessary to complete any work that prevents other trades from carrying out their work. Into this category comes the hull treatment workers. These are the first workers on the external areas of the vessel. This trade will hand scrape the hull free from sea growth and then carry out high-pressure jetwashing of the hull. Preparations will then be made for this trade to continue with grit-blasting to clean the hull and then apply the first coat of primer paint. Once this high activity area has been completed, the work rate of the hull treatment trade may be reduced to make way for other trades to carry out their external work. The hull treatment trade workload may now be reduced, and certain of these workers released to other high activity areas.

During this period, very few other trade workers will be able to work in the same vicinity, so the planners assign these to other areas. The trade graph will indicate the high work rate of the hull treatment workers initially on the hull and then show the tapering off.

All trades are considered in a similar manner and graphs drawn from historical data until the work rate of each trade can be predicted.

The graphs have been drawn up indicating the trend of work rate of the individual trades and are used to determine the timescale of the repair period.

Conflicts always occur in repair period. As noted with the hull treatment, no other trade can work during this period, so this is a conflict in this area. There are many conflicts between trades and also within trades, causing delays in starting jobs, and continuing jobs. The jobs on the critical path generally are given a higher priority than other jobs by the overall co-ordinator of the work.

The following example describes the method of using the workload graphs :

As an example, take the marine fitter graph.

The estimator/planner will have determined the total man-hours for the complete specified works so will have a grand total.



Knowing the available resources at the yard, the maximum number allocated to a ship will be known, e.g. 10 men.

The percentage work is an estimated total, e.g. 1000 man-hours.

Each man may be assigned to work 10 hours per shift.

So the logical time to complete the works will be :

$1000 \text{ man-hours} / 10 \text{ men} \times 10 \text{ hours per shift} = 10 \text{ shifts}$ . When this is determined, a decision will be made on whether this time is excessive and, if so, additional resources will be assigned. If not then it will continue as planned.

$10 \text{ men} \times 10 \text{ hours per shift} = 100 \text{ man-hours per shift}$ , should be 10% of the work per shift. Carrying out this constant work rate would produce a straight line graph at  $45^\circ$  where the slope would be 'y' = 'x'.

However, this does not happen and is shown from the marine fitter graph as follows:

Each work shift comprises 100 man-hours.

The first shift's work will complete 5% of the work.

The second shift's work will continue up to 14% of the work, an increase of 9%.

The third shift's work will continue up to 31% of the work, an increase of 17%.

The fourth shift's work will continue up to 43% of the work, an increase of 12%.

The fifth shift's work will continue up to 55% of the work, an increase of 12%.

The sixth shift's work will continue up to 67% of the work, an increase of 12%.

The seventh shift's work will continue up to 81% of the work, an increase of 14%.

The eighth shift's work will continue up to 88% of the work, an increase of 7%.

The ninth shift's work will continue up to 95% of the work, an increase of 7%.

The tenth shift's work will continue up to 100% of the work, an increase of 5%.

This indicates the varying degrees of output for the same man-hour input. This is caused by the type of conflicts shown in the hull treatment workers, where other trades must allow them sole access to certain areas.

The trade supervisors, together with the planners, may increase or decrease the quantity of workers in certain areas to allow smooth running of the work.

This is one use of the graphs. Another is where a vessel must be completed within a certain timescale and the graphs are used to indicate the numbers of workers per trade that must be used in order to meet the target date. Knowing this, if the yard do not possess the full resources themselves, then the planners can ascertain the numbers of sub-contracted labour that are required to complete the total work schedule.

In this instance the timescale will be a known entity, so then it will be established what are the exact number of man-hours per shift per trade to complete the work in accordance with the work rate of the trade graph. A histogram would then be drawn indicating the number of men per trade per shift, and these resources would be allocated well in advance of the arrival date of the vessel.

To illustrate this, again take the case of the marine fitters having a workload of 1000 man-hours and an exact time of 10 shifts is allocated to complete the job :

The first shift's work will complete 5% of the work = 50 man-hours.

The second shift's work will complete 9% = 90 man-hours.

The third shift's work will complete 17% = 170 man-hours.

The fourth shift's work will complete 12% = 120 man-hours.

The fifth shift's work will complete 12% = 120 man-hours.

The sixth shift's work will complete 12% = 120 man-hours.

The seventh shift's work will complete 14% = 140 man-hours.

The eighth shift's work will complete 7% = 70 man-hours.

The ninth shift's work will complete 7% = 70 man-hours.

The tenth shift's work will complete 5% = 50 man-hours.

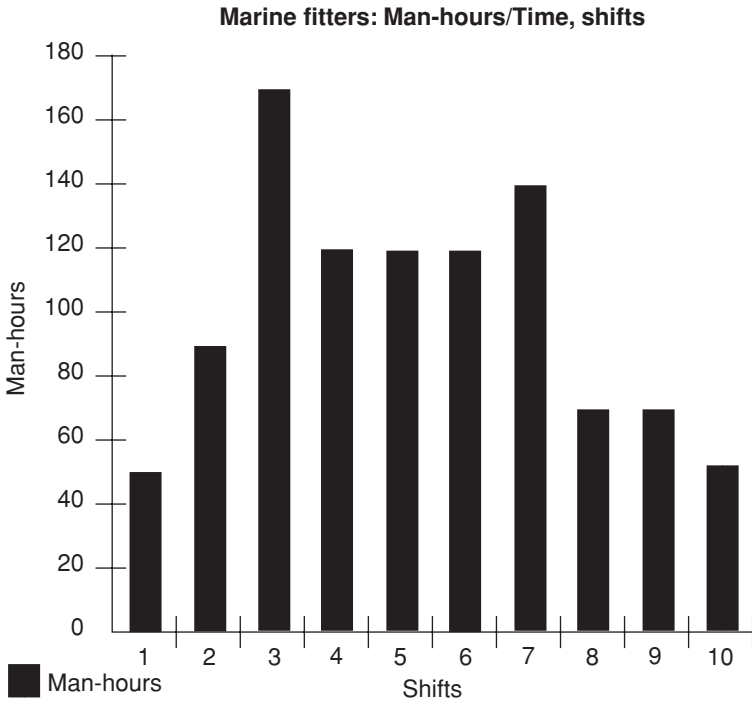
Total man-hours = 1000.

Total shifts = 10

The manpower input is variable in accordance with the graph work rate loading.

The workers can therefore be assigned against the shift man-hour totals necessary to complete each shift's total workload.

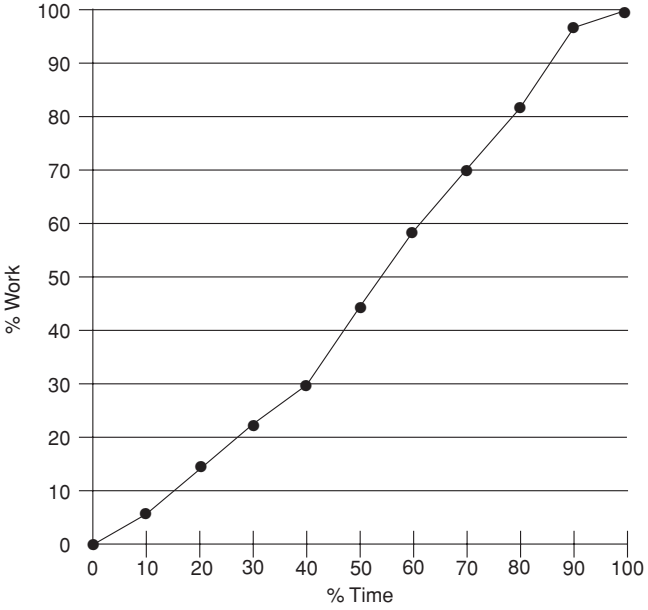
The following histogram indicates the calculated shift totals shown above and the planners and repair co-ordinators can assign the daily trade manpowers accordingly.



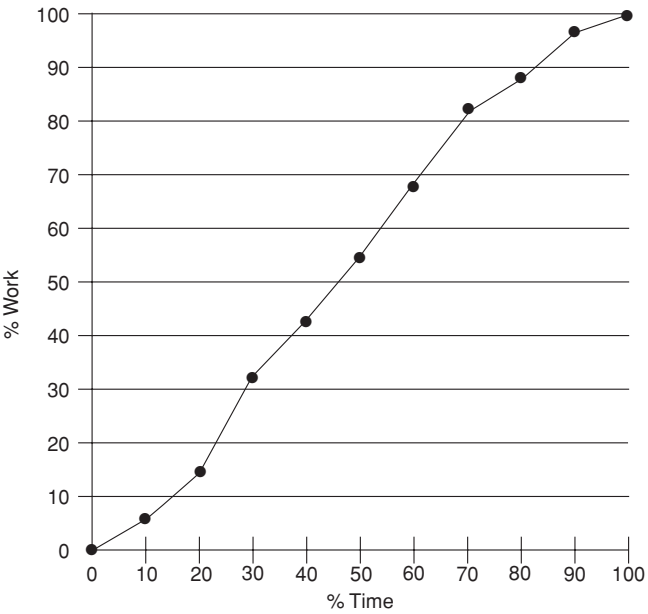
### **Sample graph loadings for major trades in ship repairing**

(It should be noted that these sample graphs are actual loadings that were used by a certain major ship repair yard from figures compiled from production feed back over a number of years. These graphs were then used by the commercial division planners to predict the required manpower resources for up to three months ahead.)

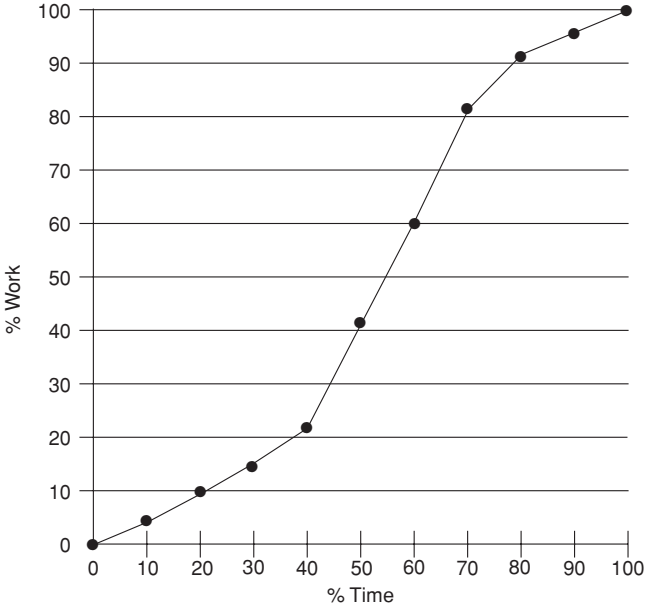
**Hull blasting painting man-hours**



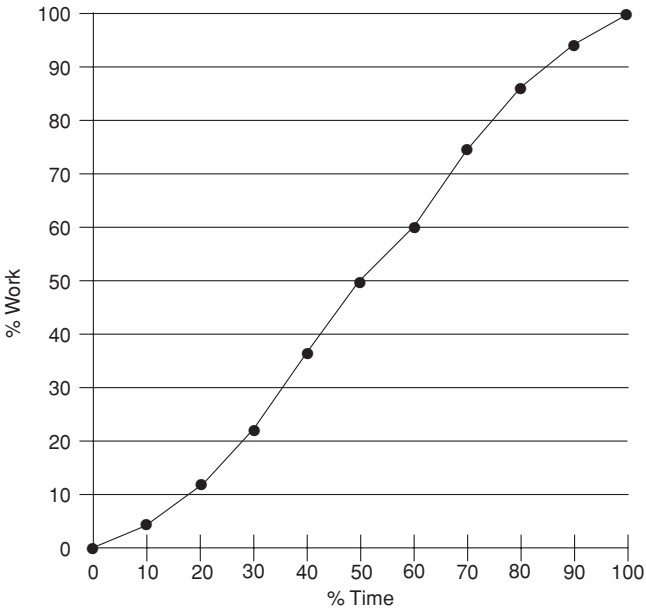
**Marine fitter man-hours**



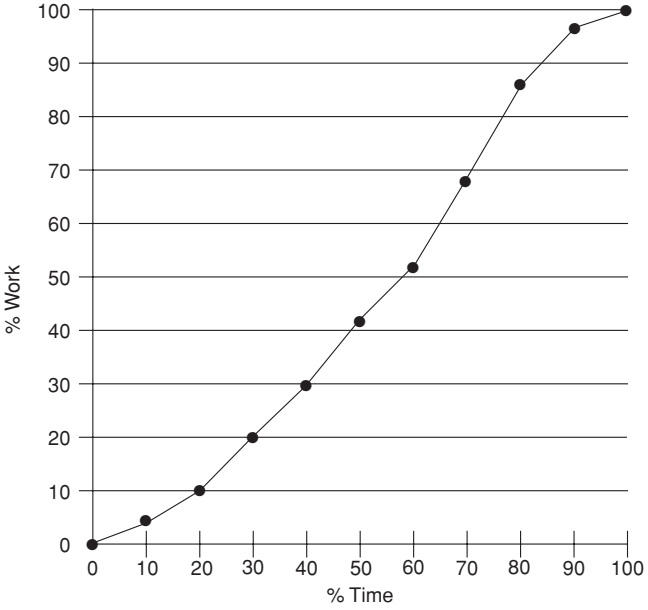
**Marine pipefitter man-hours**



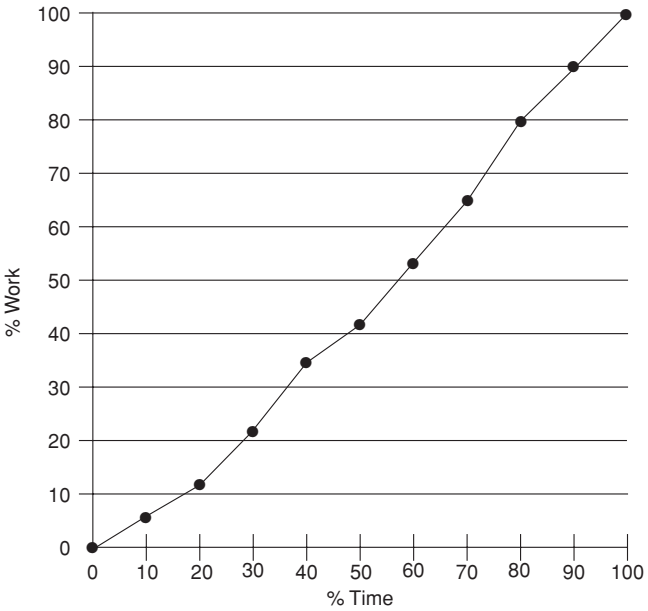
**Marine steelworker**



**Marine welder/burner**



**Marine electrician man-hours**



# Index

- Air compressors, 60, 61
- Air receivers, 61
- Anchors and cables, 26
- Auxiliary boiler, 67
- Auxiliary steam turbines, 58
  
- Ballast water tank cleaning, 84
- Bearing survey, 45, 50
- Berth preparation, 5
- Bilge area hand cleaning, 84
- Bilge water or slops handling, 83
- Boilers, 67
  
- Cables, anchors, 26
- Cargo pump turbine, 58
- Cargo pumps, 60
- Chain lockers, 27
- Compressors, air, 60, 61
- Condenser, 54
- Crankcase doors, 45, 46, 51
- Crankshaft deflections, 45, 46, 51
  
- Cylinder head, 43, 48
- Cylinder liners, 44, 49
  
- Diesel engines, 42, 47
- Dock rent per day, 6
- Dock services, 7
- Docking and undocking, 6
- Docking blocks, shifting, 5
- Docking plugs, 22
- Drydocking works, 5–28
- Duplex pump, 64
  
- Electric cable conduit, 82
- Electric cable tray, 80
- Electric cable, armoured, multi-core, 77, 78
- Electric cable, single core, 79
- Electric cable, un-armoured, multi-core, 75, 76
- Electric cables, 75–79
- Electric generators, 73
- Electric motors, 71
- Electric motors, crane, 72, 73

- Electric motors, winch, 72, 73
- Electric motors, windlass, 72, 73
- Electrical insulation resistance tests, 69
- Electrical switchboard, 70
- Electrical works, 69–82
  
- Feed pump turbine, 59
- Feed pumps, 59
- Flexible coupling, 57
- Four stroke auxiliary diesel engines, 47
- Four stroke main propulsion diesel engines, 47
- Fresh water tank cleaning, 84
- Fuel oil tank cleaning, 84
  
- Gear pump, 65
- General works, 83–84
- Gudgeon pin, 48
  
- Heat exchanger, 55
- Hollow fenders in half pipe, 25
- Hull painting area formula, 12
- Hull painting of names, homeport, load lines, draft marks, 10
- Hull painting special notes, 11
- Hull painting, 10
- Hull preparation by degreasing, 8
- Hull preparation by disc preparation, 8
- Hull preparation by dry blast, 8
- Hull preparation by grit blast, 8
- Hull preparation by grit sweep, 8
- Hull preparation by hand scraping, 8
- Hull preparation by high pressure jetwash, 8
- Hull preparation by hose down with fresh water, 8
- Hull preparation by spot blast, 8
- Hull preparation by vacuum dry blast, 8
- Hull preparation by water blast, 8
- Hull preparation special notes, 9
- Hull preparation, 8
- Hull steel repairs, 29
  
- Internal steel hand scraping, 84
  
- Main condenser, 54
- Main steam turbines, 57
- Mechanical works, 41–67
- Megger tests, electrical insulation resistance, 69
  
- Oil tanker cargo pump, 60
  
- Pipe clamps, 38
- Pipe spool pieces, 39
- Pipe work renewals in copper, 37
- Pipe work renewals in schedule 40 steel, 35–36
- Pipe work renewals in schedule 80 steel, 35–36



- Pipe work, hot dip galvanising after manufacture, 36
- Pipeworks, 35–39
- Planning works, 85–92
- Propeller cleaning, in-situ, 16
- Propeller removal, 14
- Propeller repairs and balance checking, 14,15
- Propeller works, 14
- Pumps, 62
  
- Reciprocating pump, motor driven, 64, 65
- Reciprocating pump, steam driven, 64,
- Rudder clearances, 13
- Rudder gland packing, 13
- Rudder removal, 13
- Rudder works, 13
  
- Sea chests, 22
- Sea grids, 22
- Sea valves, 23
- Simplex pump, 64
- Sludge handling, 83
- Staging, 28
- Steam turbines, 58
- Steel weight calculation method, 30–31
- Steel repairs, 29
- Steel works, special notes, 33
- Steelworks, 29–33
- Steering gear, 66
- Stern gland patent seals, 19
- Stern gland repacking, 19
- Storm valves, 24
  
- Tailshaft clearances, in-situ, 17
- Tailshaft crack detection by Magnaflux test, 19
- Tailshaft patent seals, 19
- Tailshaft removal externally, 18
- Tailshaft removal internally, 18
- Tailshaft works, 17–19
- Tank cleaning, 84
- Tank manhole cover removal, 84
- Tank testing by filling with sea water, 84
- Tank testing by low pressure compressed air, 84
- Top overhaul, diesel engine, 43, 48
- Turbines, steam, 58
- Turbo alternator, 58
- Two stroke main propulsion diesel engines, 42
  
- Valve, high pressure, 52
- Valve, pipeline, 52
- Valve, sea, 23
  
- Water-tube boiler, 67
  
- Zinc anode quantity calculation, 20–21
- Zinc anodes, 20